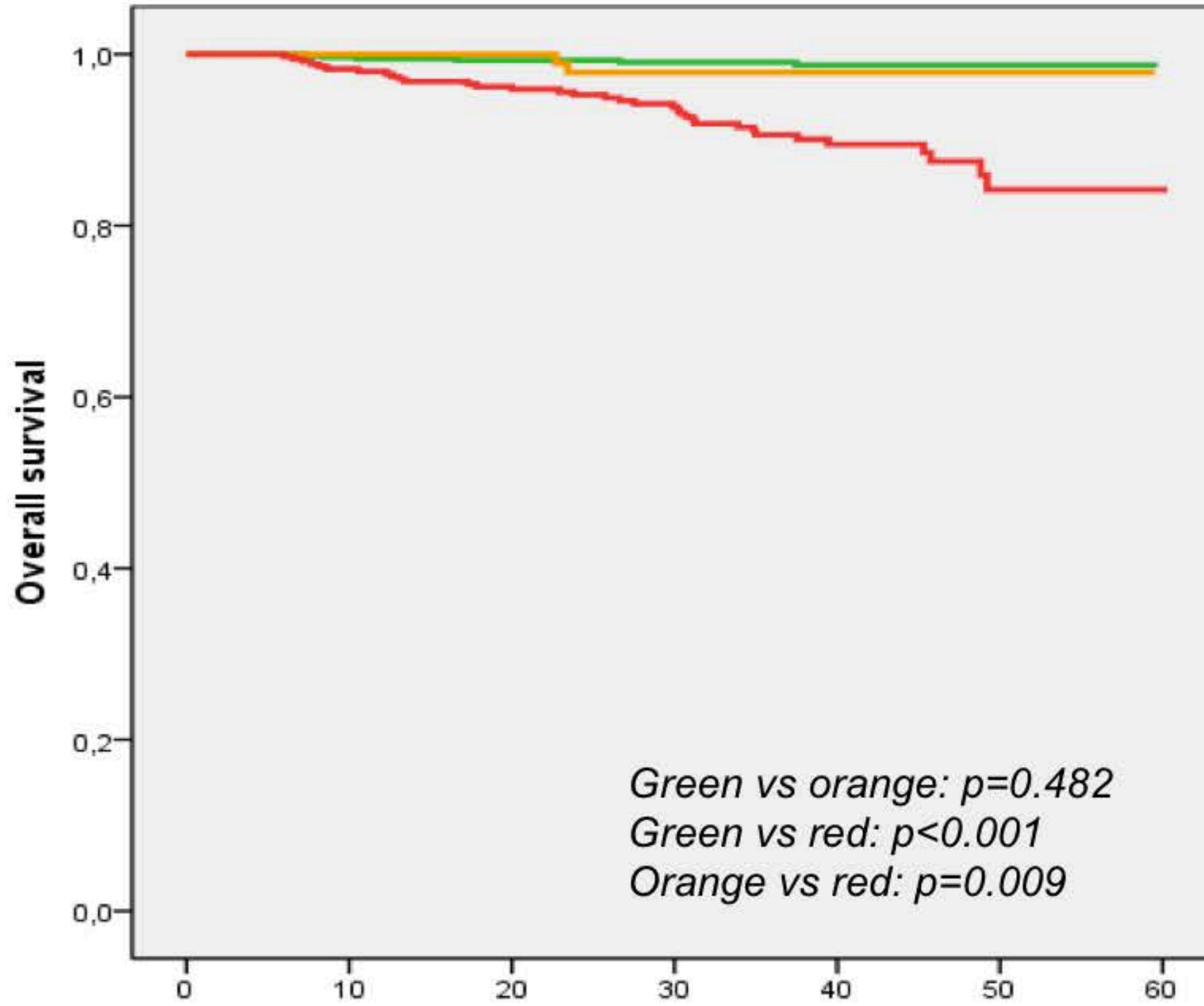
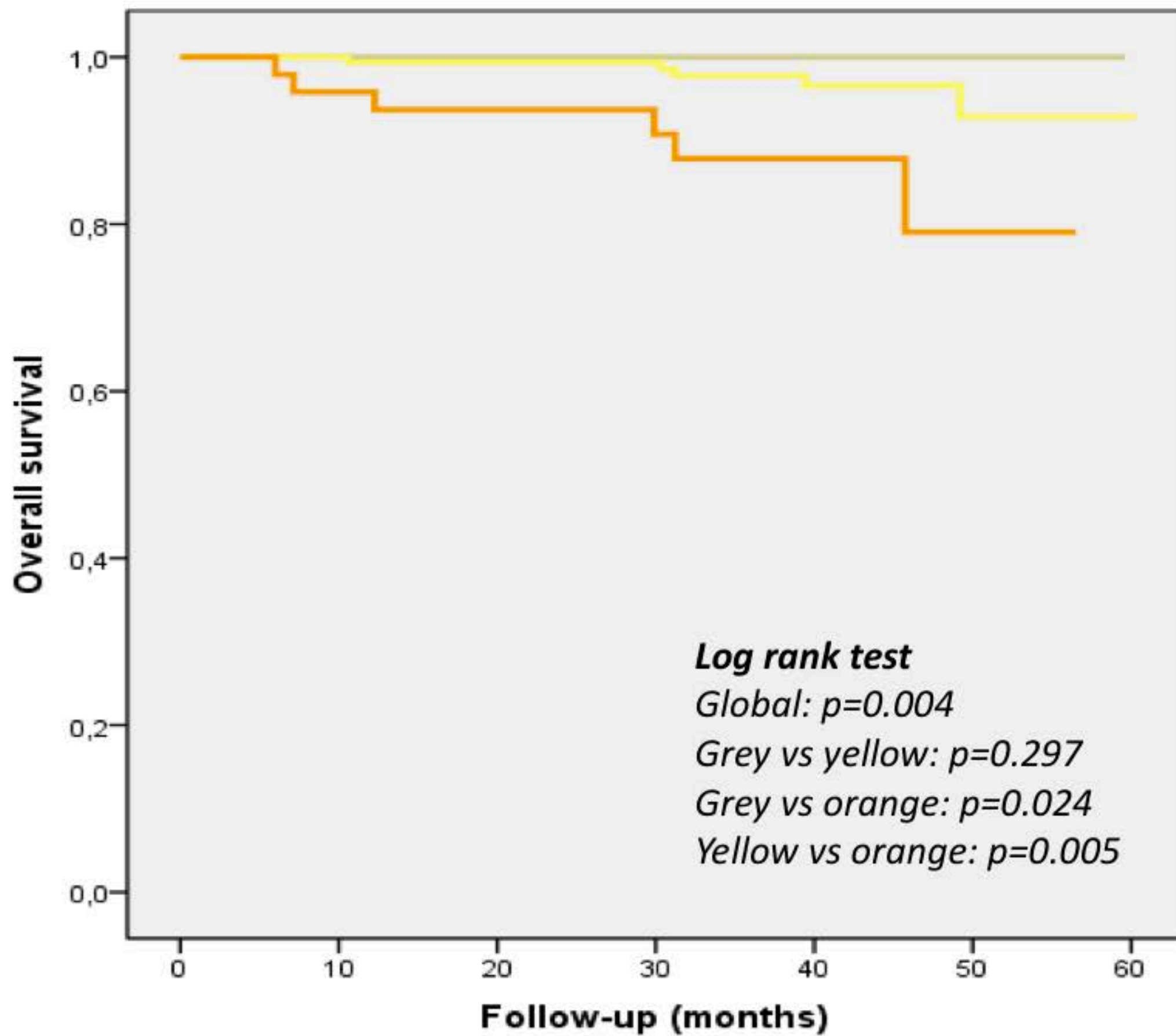


<b>Green</b>	574	567	518	403	243	66
<b>Orange</b>	321	319	300	237	147	39
<b>Red</b>	130	125	113	85	47	15



**Green** Baseline LSM <7 kPa (6 deaths /574)  
**Orange** Baseline LSM ≥7 and SVR (2 deaths /102)  
**Red** Baseline LSM ≥7 and no SVR (34 deaths /349)

	0	10	20	30	40	50	60
<b>Green</b>	574	567	518	403	243	66	
<b>Orange</b>	102	102	98	76	47	14	
<b>Red</b>	349	342	315	246	147	50	



**Grey**

36

36

35

24

16

6

**Yellow**

162

162

153

126

80

19

**Orange**

48

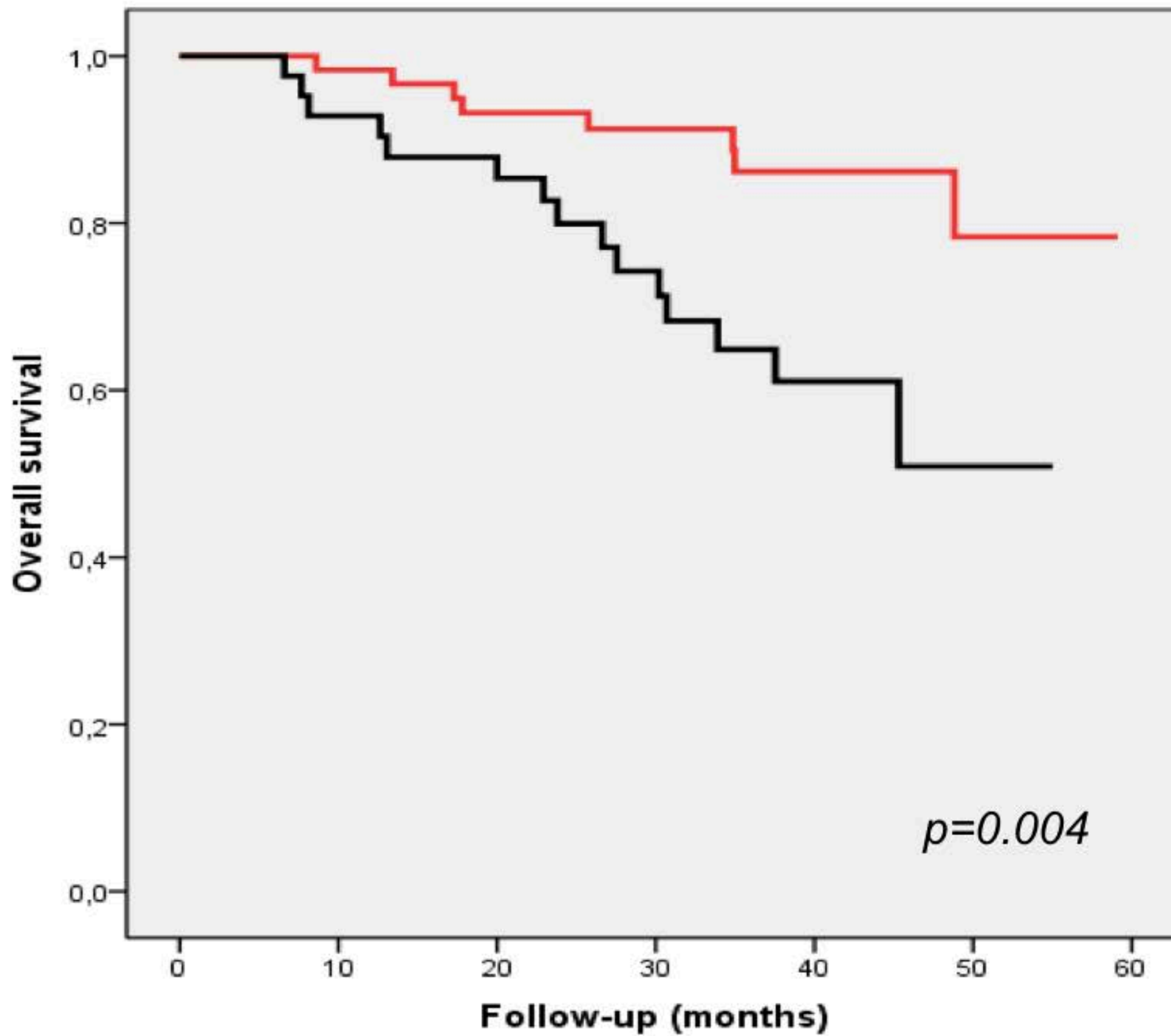
46

41

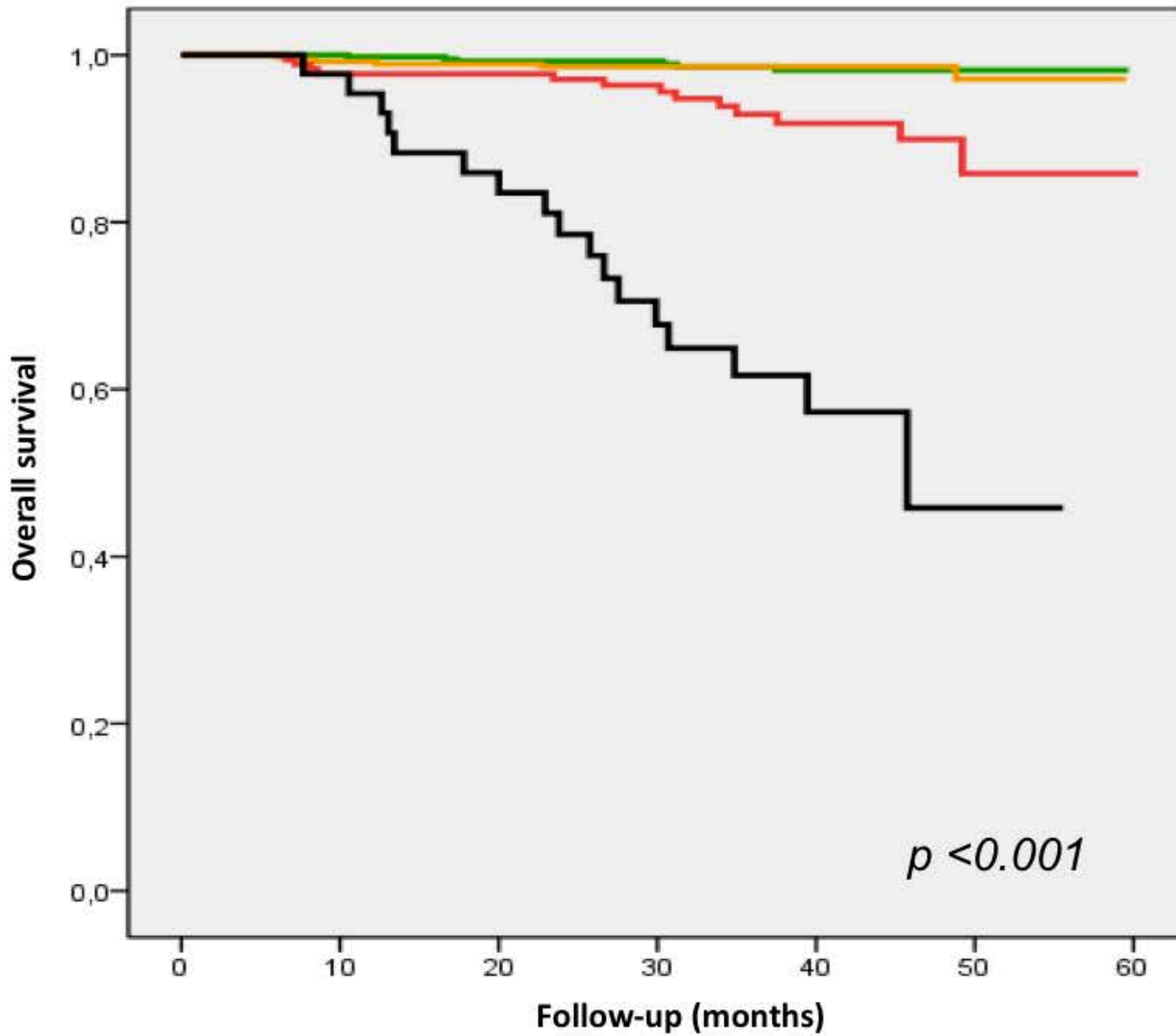
31

16

6



<b>Delta LSM <math>\leq 0</math></b>	61	60	52	40	22	7
<b>Delta LSM <math>&gt; 0</math></b>	42	38	34	25	13	2



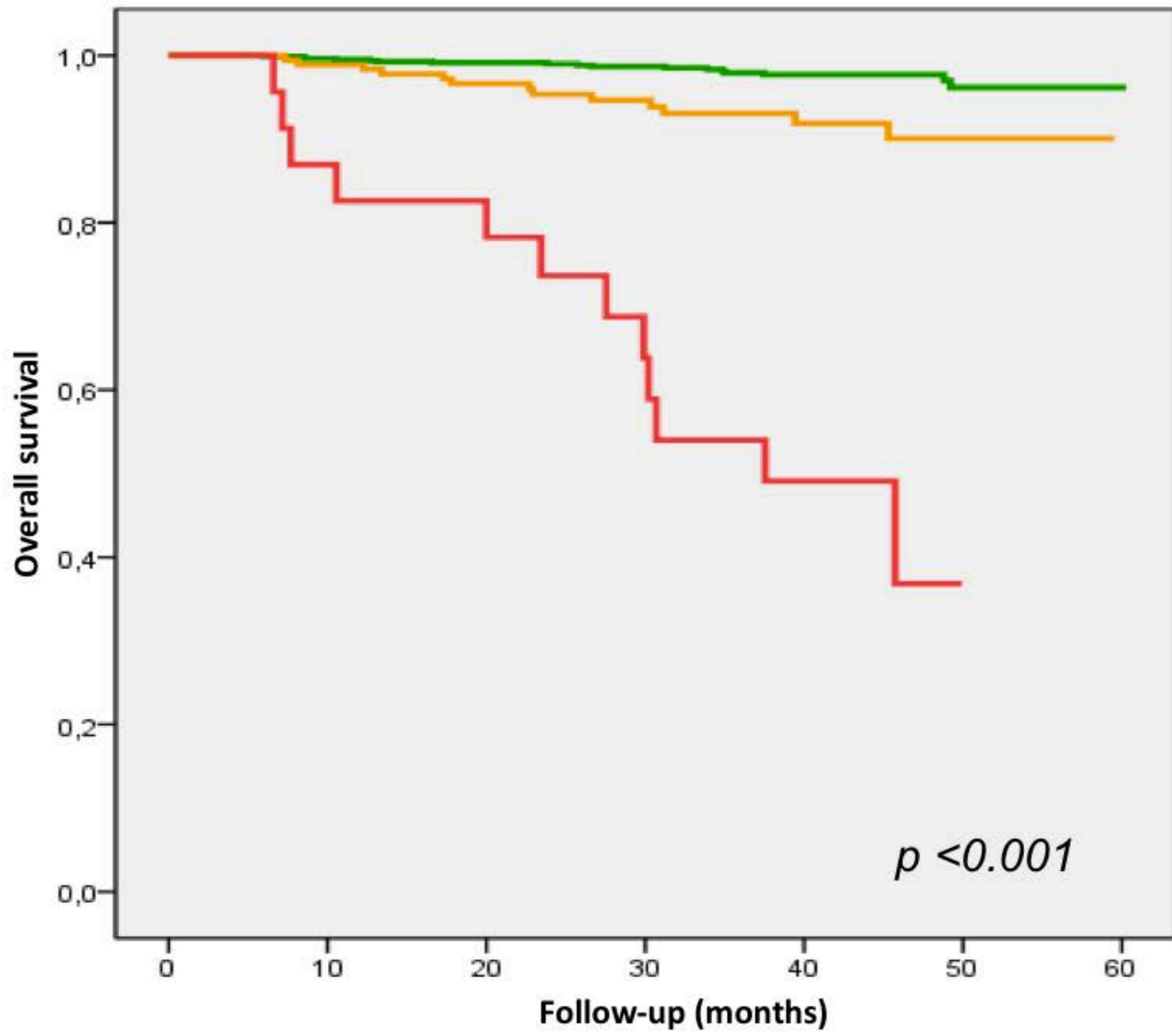
**Green** : Baseline FIB-4 <1.12 : 6 deaths/425  
**Orange** :  $1.12 \leq$  Baseline FIB-4 <2.25 : 6 deaths/378  
**Red**:  $2.25 \leq$  Baseline FIB-4 <5.8 : 13 deaths/177

**Black**: Baseline FIB-4  $\geq 5.8$  : 17 deaths/44

*p < 0.001*

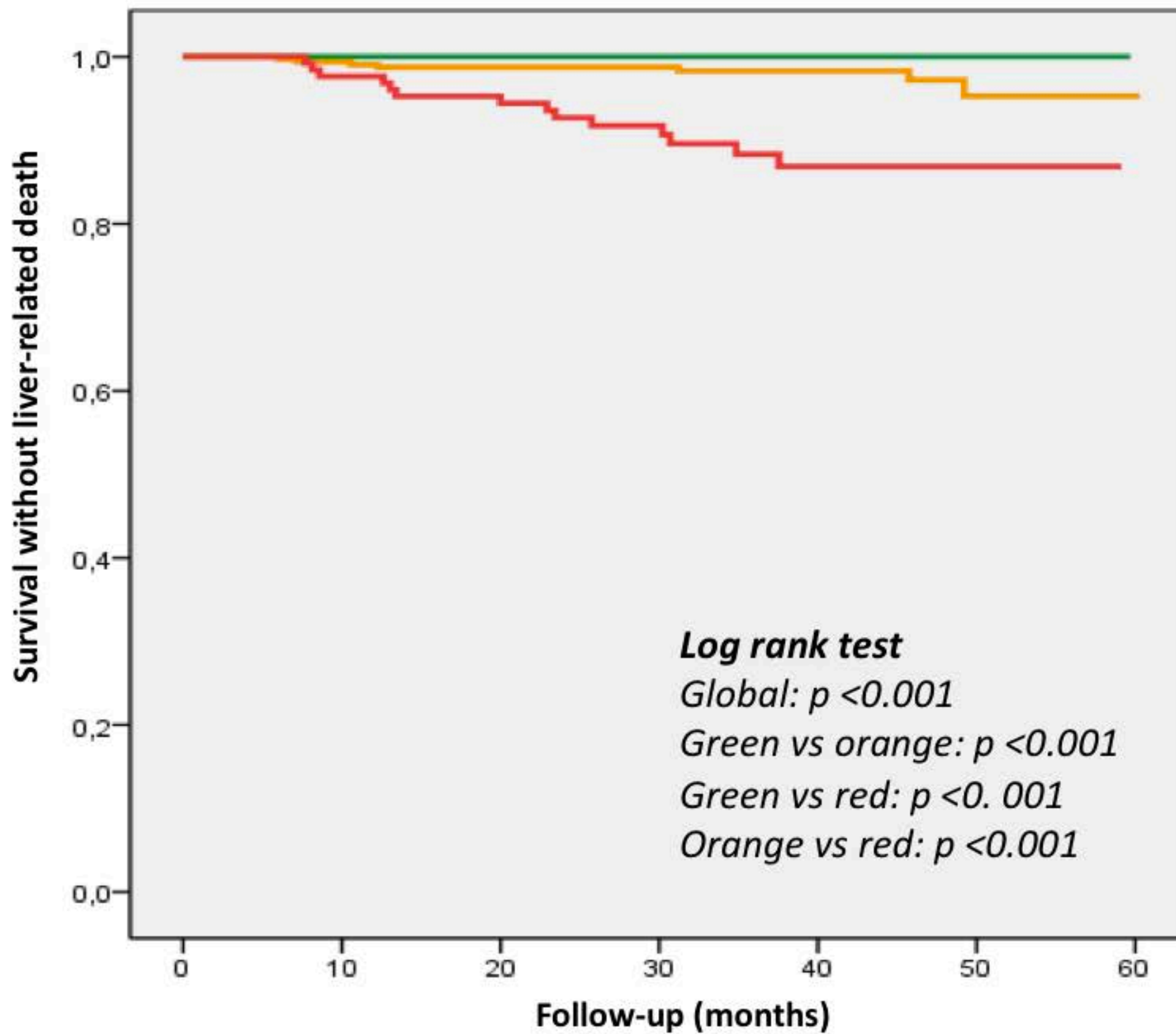
<b>Green</b>	425	424	395	308	186	53
<b>Orange</b>	378	370	340	270	167	49
<b>Red</b>	177	173	160	123	74	17
<b>Black</b>	44	43	35	24	10	1





**Delta FIB-4 (unit/year)**  
**Green:** <math>< 0.20</math> : 17 deaths/818  
**Orange :** 
**Red:**

<b>Green</b>	818	811	749	591	355	93
<b>Orange</b>	182	178	162	121	74	27
<b>Red</b>	23	20	18	13	8	0



**Baseline LSM**

**Green:** <7.0 kPa (0 death /574)

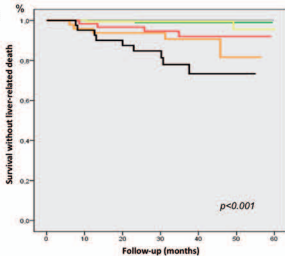
**Orange:** 7.0 – 13.9 kPa (7 deaths /321)

**Red:** ≥14.0 kPa (14 deaths /130)

<b>Green</b>	574	567	518	403	243	66
<b>Orange</b>	321	319	300	237	147	39
<b>Red</b>	130	125	113	85	47	15



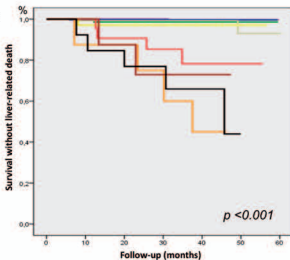
Panel s9a



Group	Baseline LSM (kPa)	Delta LSM (kPa/year)	SVR
1 (Blue)	<7	-	-
2 (Green)	≥7	-	Yes
3 (Grey)	≥7 and <14	≤1	No
4 (Yellow)	≥7 and <14	>-1 and <1	No
5 (Orange)	≥7 and <14	≥1	No
6 (Red)	≥14	≤0	No
7 (Black)	≥14	>0	No

Blue	574	567	518	403	243	66
Green	102	102	98	76	47	14
Grey	36	36	35	24	16	6
Yellow	162	162	153	126	80	19
Orange	48	46	41	31	16	6
Red	61	60	52	40	22	7
Black	42	38	34	25	13	2

Panel s9b



Group	Baseline FIB-4	Delta FIB-4 (unit/year)
1 (Violet)	<1.12	-
2 (Blue)	≥1.12 and <2.25	<0.20
3 (Green)	≥1.12 and <2.25	≥0.20
4 (Grey)	≥2.25 and <5.80	<0.20
5 (Yellow)	≥2.25 and <5.80	≥0.20 and <1.40
6 (Orange)	≥2.25 and <5.80	≥1.40
7 (Red)	≥5.80	<0.20
8 (Brown)	≥5.80	≥0.20 and <1.40
9 (Black)	≥5.80	≥1.40

Violet	425	424	395	308	186	53
Blue	303	298	274	220	134	38
Green	75	72	66	50	33	11
Grey	134	133	123	95	57	11
Yellow	34	33	30	23	15	6
Orange	9	7	7	5	2	0
Red	23	23	19	15	4	1
Brown	8	8	6	2	1	0
Black	13	12	10	7	5	0

**Supplementary table s1:** Comparison between baseline and follow-up results of fibrosis tests as a function of treatment response.

<b>Fibrosis test</b>	<b>Treatment response</b>	<b>Baseline</b>	<b>Follow-up</b>	<b>p</b>	<b>Rs (p)</b>	<b>Delta (kPa or unit/year)</b>
<b>Fibroscan (kPa)</b>	All	6.6 (5.1 - 9.5)	6.2 (4.8 – 8.8)	0.014	0.650 (<0.001)	-0.07 (-0.55 – 0.38)
	No SVR	6.3 (5.0 – 9.0)	6.1 (4.8 – 9.0)	0.756	0.681 (<0.001)	-0.03 (-0.45 – 0.40)
	SVR	8.1 (5.7 – 11.8)	6.3 (4.8 – 8.5)	<0.001	0.522 (<0.001)	-0.40 (-1.25 – 0.18)
<b>FIB-4</b>	All	1.27 (0.84 – 2.03)	1.49 (1.04 – 2.30)	<0.001	0.742 (<0.001)	0.05 (-0.02 – 0.16)
	No SVR	1.25 (0.83 – 1.95)	1.51 (1.05 – 2.37)	<0.001	0.776 (<0.001)	0.06 (0.00 – 0.16)
	SVR	1.45 (0.87 – 2.31)	1.42 (0.94 – 2.12)	0.628	0.587 (<0.001)	0.01 (-0.14 – 0.12)
<b>APRI</b>	All	0.43 (0.27 – 0.77)	0.42 (0.27 – 0.76)	0.002	0.569 (<0.001)	0.01 (-0.04 – 0.05)
	No SVR	0.41 (0.27 – 0.70)	0.45 (0.31 – 0.81)	<0.001	0.666 (<0.001)	0.01 (-0.02 – 0.06)
	SVR	0.56 (0.29 – 1.09)	0.27 (0.19 – 0.48)	<0.001	0.434 (<0.001)	-0.05 (-0.20 – 0.01)

Results are expressed as median with 1st and 3rd quartiles into brackets. Rs: Spearman correlation coefficient; SVR: sustained viral response

**Supplementary table s2:** Rate of death as a function of patient subgroups defined by baseline and delta LSM results.

Baseline LSM (kPa)	Delta LSM (kPa/year)	SVR	Patients (n)	Rate (%) of death during follow-up	
				Overall	Liver-related
<7.0	-	-	574	1.0	0.0
≥7.0	-	Yes	102	2.0	1.0
≥7.0 and <14.0	≤ -1.0	No	36	0.0	0.0
	-1.0< and <1.0	No	162	3.1	1.2
	≥1.0	No	48	12.5	10.4
≥14.0	≤0	No	61	13.1	6.6
	>0	No	42	35.7	21.4

SVR: sustained viral response

**Supplementary table s3:** Rate of death as a function of patient subgroups defined by baseline and delta FIB-4 results.

Baseline FIB-4	Delta FIB-4 (unit/year)	Patients (n)	Rate (%) of death during follow-up	
			Overall	Liver-related
<1.12	-	425	1.4	0.2
≥1.12 and <2.25	<0.20	303	1.0	0.3
	≥0.20	75	4.0	1.3
≥2.25 and <5.8	<0.20	134	3.7	1.5
	≥0.20 and <1.40	34	8.8	2.9
	≥1.40	9	55.6	44.4
≥5.8	<0.20	23	21.7	17.4
	≥0.20 and <1.40	8	62.5	25.0
	≥1.40	13	53.8	38.4