

Supplementary data for:

**A randomized trial of daclatasvir in combination with asunaprevir
and beclabuvir in patients with chronic hepatitis C virus genotype 4
infection**

Tarek Hassanein; Karen D. Sims; Michael Bennett; Norman Gitlin; Eric Lawitz; Tuan
Nguyen; Lynn Webster; Zobair Younossi; Howard Schwartz; Paul J. Thuluvath;
Helen Zhou; Bhaskar Rege; Fiona McPhee; Nannan Zhou; Megan Wind-Rotolo;
Ellen Chung; Amber Griffies; Dennis M. Grasela; David F. Gardiner

Table of Contents

Fig. 1. Phylogenetic analysis of NS5A sequences	2
Table 1. Demographic and baseline disease characteristics.....	3
Table 2. Safety and tolerability	4

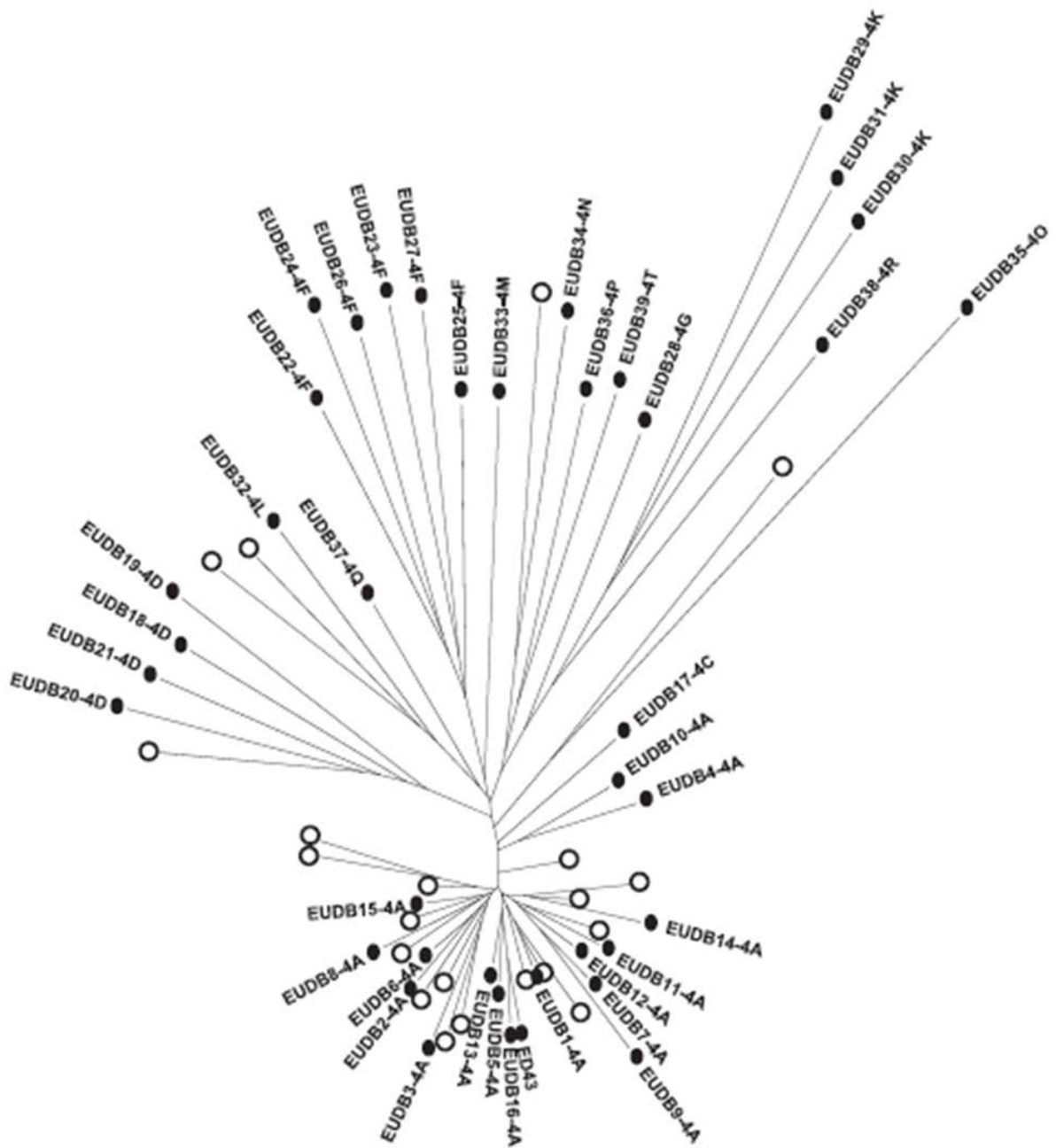


Fig. 1. Phylogenetic analysis of NS5A sequences

Open circles indicate patient-derived sequences; solid circles indicate database-derived sequences. Neighbor-joining trees are rooted on the ED43 genotype 4 reference sequence (Genbank accession number Y11604).

Table 1. Demographic and Baseline Disease Characteristics

Parameter	DCV + ASV + BCV 75 mg (N = 11)	DCV + ASV + BCV 150 mg (N = 10)
Age, median years (range)	56.0 (37-66)	50.0 (22-57)
Male gender, n (%)	7 (63.6)	6 (60.0)
Race, n (%)		
White	10 (90.9)	9 (90.0)
Black/African American	1 (9.1)	0
Other (Middle Eastern)	0	1 (10.0)
Body mass index, n (%)		
< 25 kg/m ²	3 (27.3)	3 (30.0)
25–30 kg/m ²	7 (63.6)	4 (40.0)
≥30 kg/m ²	1 (9.1)	3 (30.0)
HCV RNA, mean log ₁₀ IU/mL (SD)	5.6 (0.66)	5.7 (0.70)
<i>IL28B</i> genotype (rs12979860), n (%)		
CC	3 (27.3)	3 (30.0)
CT	4 (36.4)	6 (60.0)
TT	4 (36.4)	1 (10.0)
Alanine aminotransferase, median U/L (range)	54.0 (26.0-225.0)	42.0 (19.0-168.0)
Albumin, median g/L (range)	45.0 (41.0-48.0)	45.0 (43.0-50.0)
Platelets, median ×10 ⁹ cells/L (range)	216 (133-427)	234 (208-332)
FibroTest score, median (range)	0.55 (0.14-0.84)	0.38 (0.08-0.76)
FibroTest-derived staging, n (%)		
Score 0–0.27 (F0)	4 (36)	3 (30)
Score 0.28–0.48 (F1)	1 (9)	4 (40)
Score 0.49–0.58 (F2)	4 (36)	1 (10)
Score 0.59–0.74 (F3)	1 (9)	1 (10)
Score 0.75–1.00 (F4)	1 (9)	1 (10)

DCV, daclatasvir; ASV, asunaprevir; BCV, beclabuvir

Table 2. Safety and Tolerability

Parameter, n (%)	DCV + ASV + BCV 75 mg N = 11	DCV + ASV + BCV 150 mg N = 10	Total N = 21
Serious adverse events	0	0	0
Discontinuations due to adverse events	0	0	0
Grade 3 or 4 adverse events	0	0	0
Adverse events (any grade) reported in $\geq 10\%$ of patients			
Headache	2 (18.2)	4 (40.0)	6 (28.6)
Insomnia	4 (36.4)	0	4 (19.0)
Nausea	1 (9.1)	2 (20.0)	3 (14.3)
Pain	1 (9.1)	2 (20.0)	3 (14.3)
Grade 3 or 4 laboratory abnormalities	0	1 (10.0) ^a	1 (4.8) ^a

^aHypophosphatemia.