

Aerobic Interval Training Versus Continuous Moderate Exercise as a Treatment for the Metabolic Syndrome A Pilot Study

Arnt Erik Tjønnå, MSc; Sang Jun Lee, PhD; Øivind Rognum, MSc; Tomas O. Stølen, MSc; Anja Bye, MSc; Per Magnus Haram, PhD; Jan Pål Loennechen, PhD; Qusai Y. Al-Share, MSc; Eirik Skogvoll, PhD; Stig A. Slørdahl, PhD; Ole J. Kemi, PhD; Sonia M. Najjar, PhD*; Ulrik Wisløff, PhD*

Background—Individuals with the metabolic syndrome are 3 times more likely to die of heart disease than healthy counterparts. Exercise training reduces several of the symptoms of the syndrome, but the exercise intensity that yields the maximal beneficial adaptations is in dispute. We compared moderate and high exercise intensity with regard to variables associated with cardiovascular function and prognosis in patients with the metabolic syndrome.

Methods and Results—Thirty-two metabolic syndrome patients (age, 52.3 ± 3.7 years; maximal oxygen uptake [$\dot{V}O_{2\max}$], $34 \text{ mL} \cdot \text{kg}^{-1} \cdot \text{min}^{-1}$) were randomized to equal volumes of either moderate continuous moderate exercise (CME; 70% of highest measured heart rate [Hf_{\max}]) or aerobic interval training (AIT; 90% of Hf_{\max}) 3 times a week for 16 weeks or to a control group. $\dot{V}O_{2\max}$ increased more after AIT than CME (35% versus 16%; $P < 0.01$) and was associated with removal of more risk factors that constitute the metabolic syndrome (number of factors: AIT, 5.9 before versus 4.0 after; $P < 0.01$; CME, 5.7 before versus 5.0 after; group difference, $P < 0.05$). AIT was superior to CME in enhancing endothelial function (9% versus 5%; $P < 0.001$), insulin signaling in fat and skeletal muscle, skeletal muscle biogenesis, and excitation-contraction coupling and in reducing blood glucose and lipogenesis in adipose tissue. The 2 exercise programs were equally effective at lowering mean arterial blood pressure and reducing body weight (-2.3 and -3.6 kg in AIT and CME, respectively) and fat.

Conclusions—Exercise intensity was an important factor for improving aerobic capacity and reversing the risk factors of the metabolic syndrome. These findings may have important implications for exercise training in rehabilitation programs and future studies. (*Circulation*. 2008;118:346-354.)

Key Words: endothelium ■ exercise ■ metabolic syndrome X ■ obesity ■ oxygen

The metabolic syndrome is a cluster of cardiovascular risk factors, including elevated blood pressure, dyslipidemia, impaired glycemic control, and abdominal obesity.¹ This syndrome affects $\approx 25\%$ of the adult US population and is reaching an epidemic spread in parallel to obesity, which is estimated to affect ≈ 312 million people worldwide. With at least 1.1 billion overweight people, the incidence of the metabolic syndrome is expected to continue to rise,² warranting thorough mechanistic understanding to enable optimal treatment at the socioeconomic scale.

Clinical Perspective p 354

The metabolic syndrome is associated with increased cardiovascular morbidity and mortality because individuals with the metabolic syndrome are 3 times more likely to die of coronary heart disease than healthy counterparts after adjustment for conventional cardiovascular risk factors.³ Aerobic fitness and endothelial function are reduced in individuals with the metabolic syndrome and have been proposed to be independent and strong predictors of mortality relative to other established risk factors.^{4,5} Although a direct cause-

Continuing medical education (CME) credit is available for this article. Go to <http://cme.ahajournals.org> to take the quiz.

Received October 25, 2007; accepted May 27, 2008.

From the Department of Circulation and Medical Imaging (A.E.T., Ø.R., T.O.S., A.B., P.M.H., J.P.L., S.A.S., U.W.) and Unit for Applied Clinical Research, Faculty of Medicine (E.S.), Norwegian University of Science and Technology, Trondheim, Norway; Department of Physiology and Pharmacology and the Center for Diabetes and Endocrine Research, University of Toledo, Toledo, Ohio (S.J.L., Q.Y.A.-S., S.M.N.); Department of Cardiology (J.P.L., S.A.S., U.W.) and Anaesthesia and Emergency Medicine (E.S.), St Olav's Hospital, Trondheim, Norway; and Institute of Biomedical and Life Sciences, University of Glasgow, Glasgow, UK (O.J.K.).

*Drs Najjar and Wisløff share senior authorship.

Clinical trial registration information—URL: <http://clinicaltrials.gov>. Unique identifier: NCT00218998.

Correspondence to Ulrik Wisløff, Department of Circulation and Medical Imaging, Norwegian University of Science and Technology, Medical Technology Research Center, Olav Kyrres Gate 9, N-7489 Trondheim, Norway. E-mail ulrik.wisloff@ntnu.no

© 2008 American Heart Association, Inc.

Circulation is available at <http://circ.ahajournals.org>

DOI: 10.1161/CIRCULATIONAHA.108.772822

effect relationship has not been established, impaired aerobic capacity is a common factor underlying cardiovascular and metabolic diseases. Indeed, it has been well established that exercise training at least partly reverses the metabolic syndrome,³ but the optimal level of exercise needed to prevent and treat the metabolic syndrome and its associated cardiovascular abnormalities remains undefined.

Here, we address this issue by testing the efficacy of 2 distinctly different modes of exercise to reverse features of the metabolic syndrome. That is, adaptations were measured in response to either continuous moderate exercise (CME) or aerobic interval training (AIT) at a high intensity in humans with clinically defined metabolic syndrome.

Methods

Patients

Thirty-two patients with the metabolic syndrome defined according to the World Health Organization⁶ criteria were included. All subjects provided written informed consent, and the regional committee for medical research ethics approved the protocol. Patients were randomized and stratified (by age and gender) into AIT (n=12), CME (n=10), or a control group (n=10). Registration of diet behavior was performed with a questionnaire that was described previously.⁷

Maximal Oxygen Uptake

Before measurements of maximal oxygen uptake ($\dot{V}O_{2\max}$), subjects were informed about the test and instructed to exercise to their maximum limit. Familiarization with the treadmill, the warmup, and the $\dot{V}O_{2\max}$ ramp procedure have been described in detail.⁸ A leveling off of oxygen uptake despite increased workload and a respiratory exchange ratio >1.05 were used as criteria for reaching the true $\dot{V}O_{2\max}$, and this was achieved in all individuals in the present study.

Training Protocols

Both exercise groups performed endurance training as walking/running "uphill" on a treadmill 3 times a week for 16 weeks. AIT subjects warmed up for 10 minutes at 70% of maximal heart frequency (Hfmax) before performing four 4-minute intervals at 90% of Hfmax with a 3-minute active recovery at 70% of Hfmax between intervals and a 5-minute cool-down period, giving a total exercise time of 40 minutes. To equalize training volumes to similar amounts of kilocalories per session in the 2 groups, the CME group had to exercise for 47 minutes at 70% of Hfmax at each exercise session as previously detailed.⁸ The control group followed advice from family physicians. Heart frequency was continuously monitored during exercise to ensure that the subjects trained at the intended intensity.

Endothelial Function and Blood Pressure

Endothelial function was measured as flow-mediated dilatation (FMD) with high-resolution vascular ultrasound (14-MHz echo Doppler probe, Vivid 7 System, GE Vingmed Ultrasound, Horten, Norway) according to the current guidelines.⁹ The procedures for measuring FMD and blood pressure were recently published by our group.¹⁰ Shear rate was calculated as blood flow velocity divided by diameter ($\text{cm} \cdot \text{s}^{-1} \cdot \text{cm}^{-1}$) as previously published.¹¹ Because no group differences were found, data are not presented. All ultrasound images were analyzed in random order with EchoPACtm (GE Vingmed Ultrasound AS) by a blinded investigator.

Biopsies

One week before the $\dot{V}O_{2\max}$ test and at least 4 days after the last training session, muscle biopsies of the vastus lateralis muscle were taken with a 5-mm-diameter biopsy needle (Bergstrom, Sweden) under local anesthesia (2% lidocaine). A small muscle sample was

Table 1. Patient Characteristics

	Baseline Control	Baseline CME	Baseline AIT
Physiological			
Age, y	49.6±9.0	52.0±10.6	55.3±13.2
Gender, M/F	5/4	4/4	4/7
Weight, kg	96.4±12.1	91.2±19.5	91.8±17.5
Body mass index, kg/m ²	32.1±3.3	29.4±4.9	29.8±5.5
Waist-to-hip ratio	0.97±0.08	0.97±0.08	0.94±0.07
Medications, n			
Angiotensin II blockers	4	1	2
β-Blockers	1	1	0
Calcium antagonists	1	1	1
α-Blockers	0	0	1
Statins	0	0	2
Acetylsalicylic acid	0	0	1
Metformin	1	1	1

Data are presented as mean±SD when appropriate.

used immediately for sarcoplasmic reticulum Ca²⁺ ATPase 1 and 2 Ca²⁺ transport measurements with a fluorescence microscope as recently described.¹² The remaining biopsy was immediately frozen in liquid nitrogen and stored at −80°C. A fat biopsy was taken with the subjects lying in a prone position by aspiration from the gluteal fat pad with a 20-mL sterile plastic syringe and a 15-gauge needle. Fat samples were immediately frozen in liquid nitrogen and stored at −80°C.

Protein Phosphorylation and Expression Levels

Frozen tissue samples were homogenized in ice-cold lysis buffer (1% Triton X-100 in the presence of phosphatase and protease inhibitors), and the lysates were treated with 100 nmol/L insulin (Sigma, St Louis, Mo) or buffer alone for 10 minutes before phosphorylation in the presence of cold ATP. Proteins were immunoprecipitated with an anti-insulin receptor (IR) antibody (Santa Cruz Biotechnology Inc, Santa Cruz, Calif), analyzed on 7% SDS-PAGE, and transferred to nitrocellulose membranes before detection of phosphorylated residues with a monoclonal anti-phosphotyrosine antibody (Cell Signaling Technology, Danvers, Mass). The blots were reprobbed with an antibody against the β subunit of IR (Santa Cruz Biotechnology Inc) to account for the amount of IR in immunoprecipitates. Moreover, 5 μg total lysates was analyzed by 4% to 12% SDS-PAGE and immunoblotting with antibodies against fatty acid transporter protein 1 (FATP-1), fatty acid synthase (FAS), and the peroxisome proliferative-activated receptor γ coactivator 1α (PGC-1α) (Santa Cruz Biotechnology Inc) before reprobbed with antibodies against actin or tubulin to normalize for the amount of protein loaded. After incubation with horseradish peroxidase-conjugated anti-immunoglobulin G antibodies, proteins were detected by enhanced chemiluminescence (Amersham Pharmacia Biotech, Uppsala, Sweden) and quantified by densitometry.

Blood Analyses

If not otherwise stated, all blood analyses were performed with standard local procedures. Oxidized low-density lipoprotein (LDL) and adiponectin were measured in plasma with specific Mercodia ELISA kits (Mercodia, Uppsala, Sweden); total nitrite concentration was quantified with a commercially available assay for nitric oxide (NO) detection (R&D Systems, Inc, Minneapolis, Minn); and plasma insulin was analyzed by a radioimmunoassay kit (Linco Research, St Charles, Mich). To estimate β-cell function and overall insulin sensitivity, the homeostasis assessment model (HOMA) was used.

Table 2. Parameters Related to the Metabolic Syndrome Before and After the Experimental Period

	Control		Moderate		Interval	
	Baseline	After	Baseline	After	Baseline	After
Blood variables						
Insulin, pmol/MI	115.1±23.4	111.4±20.2	104.2±27.4	105.5±24.1	111.2±34.6	113.2±7.0
Fasting glucose, mmol/L	6.1±0.2	6.8±0.3*	6.1±0.5	6.5±0.6	6.9±0.6	6.6±0.6‡
Insulin sensitivity, (HOMA, %)	60.0±7.9	59.3±8.2	64.4±5.7	50.2±4.9	62.2±8.0	77.2±4.9*‡
β-Cell function (HOMA, %)	80.9±10.3	76.7±8.2	78.9±11.0	80.9±8.7	76.8±12.6	97.0±9.2*‡
Microalbuminuria, albumin excretion, μg/min	42.2±32.3	42.8±32.2	21.4±10.0	13.5±5.8	23.0±11.3	7.7±1.3
High-density lipoprotein, mmol/L	0.62±0.05	0.58±0.08	0.74±0.09	0.80±0.08	0.69±0.07	0.84±0.10*
Triglycerides, mmol/L	1.84±0.40	2.00±0.54	1.47±0.45	1.67±0.38	1.65±0.20	1.70±0.19
Adiponectin, μg/mL	6.4±2.0	7.0±1.1	6.7±1.5	8.2±1.4*§	7.8±2.3	9.4±3.0*§
Body composition						
Weight, kg	96.4±4.0	96.2±4.9	91.2±6.9	87.6±6.5*	91.8±5.3	89.5±4.9*
Body mass index, kg/m ²	32.1±1.1	32.0±1.3	29.4±1.7	28.2±1.5*§	29.8±1.7	29.1±1.5*
Waist, cm	114.3±2.7	112.0±3.4	105.1±5.3	99.1±5.0*§	105.5±4.1	100.5±3.6*
Waist-to-hip ratio	0.97±0.03	0.96±0.03	0.97±0.03	0.93±0.03	0.94±0.02	0.94±0.02
Blood pressure, mm Hg						
Systolic blood pressure	146±6	141±5	131±6	121±5*	144±5	135±5*
Diastolic blood pressure	95±5	96±4	88±4	82±5	95±3	89±3*
Mean arterial blood pressure	111±5	108±5	102±4	95±5*	111±3	105±3*
Exercise parameters						
$\dot{V}O_2$ max, mL · kg ⁻¹ · min ⁻¹	32.3±3.4	33.7±2.7	36.0±3.2	41.6±3.6*§	33.6±2.5	45.3±3.3‡†
$\dot{V}O_2$ max, mL · kg ^{-0.75} · min ⁻¹	101.1±10	105.1±8	110.8±10	126.5±7*§	103.2±7	138.0±9‡†
Peak heart rate, bpm	175±9	184±3	189±4	192±4	176±5	178±5
Peak oxygen pulse, mL/bpm	17.8±1.6	17.5±1.4	17.3±1.9	18.9±2.2	17.2±1.1	22.2±1.8*‡

Data are presented as mean±SEM.

*Significantly different within each group from before to after ($P<0.05$).

†Significantly different within each group from before to after ($P<0.01$).

‡Significantly different from the other groups ($P<0.05$).

§Different from control ($P<0.05$).

Statistical Analyses

The primary outcome variable was $\dot{V}O_2$ max. Prior experience suggests an SD of ≈ 2 to 3.¹³ No formal sample size calculation was done, but with 10 subjects in each group, a standardized within-group difference of 1.0 may be detected with a paired t test with 80% power at a significance level of 5%.¹⁴ Clinically, this corresponds to a detectable difference for $\dot{V}O_2$ max of 3 mL · kg⁻¹ · min⁻¹. Continuous variables are presented as mean±SD for descriptive purposes and as mean±SEM when group differences are of primary interest. Comparison of continuous variables was done according to design (number of groups, paired or unpaired) using the linear model with correction for baseline value.¹⁵ The Wilcoxon, Mann–Whitney, or Kruskal–Wallis nonparametric procedures were used if the assumption of normality and homogeneity of variance was in doubt. Within-group changes in individual risk factors constituting the metabolic syndrome were tested with the McNemar test; the total number of factors changing across groups was tested with the Mann–Whitney test. The potential for spurious significance resulting from multiple testing and a large number of variables relative to subjects is recognized, but because this was a pilot study, no correction for multiple comparisons was applied. Reported probability values are 2 sided and referred to within-group comparison unless specified otherwise. Values of $P<0.05$ are considered as statistically significant. SPSS 14.0 (SPSS Inc, Chicago, Ill) was used for all analyses.

The authors had full access to and take full responsibility for the integrity of the data. All authors have read and agree to the manuscript as written.

Results

Baseline Characteristics

At baseline, patients had comparable body weights, body mass indexes, waist-to-hip ratios, blood plasma parameters, and blood pressures (Tables 1 through 3). During the experimental period, 4 patients were unable to complete the training program: 1 (AIT group) relocated, 1 (CME group) withdrew for personal reasons, 1 (control group) had a minor hip injury, and 1 (CME) refused to perform follow-up tests for personal reasons (Figure 1). Thus, 28 patients carried out 90±2% of the scheduled training sessions.

Clinical Follow-Up

Despite no diet alterations during the 16-week intervention period (data not shown), AIT and CME patients exhibited a slight reduction of 3% and 4%, respectively, in body weight (both $P<0.05$, with no difference between AIT and CME; Table

Table 3. Overview of Number of Patients Who Had the Different Variables of the Metabolic Syndrome According to the Definition (See Methods)

	Control		Moderate		Interval	
	Baseline	After	Baseline	After	Baseline	After
Metabolic syndrome factors, median (range), n	5 (4–8)	6 (3–9)	5 (3–7)	4 (1–8)	6 (4–7)	4 (2–6)*†
Patients with metabolic syndrome, n	9/9	9/9	8/8	5/8	11/11	6/11†‡
Separate variables, n						
Fasting glucose	8/9	9/9	6/8	7/8	11/11	7/11
2-h Post glucose load	6/9	5/9	7/8	3/8	8/11	4/11
High-density lipoprotein	9/9	9/9	6/8	6/8	10/11	8/11
Triglycerides	3/9	6/9	2/8	3/8	4/11	5/11
Body mass index	5/9	6/9	4/8	3/8	4/11	4/11
Waist-to-hip ratio	9/9	8/9	8/8	6/8	9/11	11/11
Systolic blood pressure	6/9	5/9	2/8	2/8	6/11	3/11
Diastolic blood pressure	4/9	6/9	5/8	3/8	8/11	4/11
Microalbuminuria	2/9	1/9	3/8	1/8	2/11	0/11

Data are presented as median (range) when appropriate.

*Significantly different within each group from before to after ($P<0.01$).

†Significantly different from the other groups ($P<0.05$).

‡Significantly different within each group from before to after ($P<0.05$).

1) and body mass index (both $P<0.05$; Table 1). Similarly, the waist circumference was reduced by 5 and 6 cm in the AIT and CME groups, respectively ($P<0.05$; Table 2). AIT reduced more of the other factors of the metabolic syndrome, including insulin sensitivity (HOMA) (group difference, $P<0.05$; Tables 2 and 3) compared with CME. At the end of the training period, 46% ($P<0.05$) in the AIT and 37% in the CME groups ($P=0.23$; between-group difference, $P<0.05$) were no longer diagnosed with the metabolic syndrome; in the control group, the syndrome persisted in all subjects (Table 3).

Blood Pressure

Both AIT and CME decreased systolic and diastolic blood pressures by ≈ 10 mm Hg (both $P<0.05$) and ≈ 6 mm Hg (AIT, $P<0.05$; CME, $P=0.24$; Table 2), respectively.

Aerobic Capacity

AIT and CME increased $\dot{V}O_{2\max}$ by 35% and 16% ($P<0.01$), respectively (group difference, $P<0.01$; Figure 2A). Only AIT had a significantly increased peak O_2 pulse ($P<0.05$; between-group difference, $P<0.001$; Table 2).

PGC-1 α and Sarcoplasmic Reticulum Ca²⁺ ATPase

Decreased exercise capacity in individuals with the metabolic syndrome may be linked to skeletal muscle abnormalities related to mitochondrial biogenesis and excitation-contraction coupling.^{13,16} Therefore, we examined the levels of PGC-1 α , a critical coordinator for activation of metabolic genes controlling substrate use and mitochondrial biogenesis, and the reuptake of Ca²⁺ into the sarcoplasmic reticulum. We found that PGC-1 α levels in the vastus lateralis muscle increased by 138% by AIT but were not significantly altered in the other groups (group difference, $P<0.01$; Figure 2B). Furthermore, AIT but not CME increased the maximal rates of sarcoplasmic reticulum Ca²⁺ uptake by $\approx 50\%$ ($P<0.03$; Figure 2C; between-group difference, $P<0.05$; Figure 2C).

Endothelial Function

AIT and CME improved FMD by 9% ($P<0.001$) and 5% ($P<0.001$), respectively (group difference, $P<0.001$; Figure 2D). Endothelium-independent dilatation by the administration of nitroglycerine sublingually was equal in all groups (data not shown).

We observed increased availability of NO ($36\pm 3\%$; $P<0.03$) after AIT but not CME ($P=0.37$; group difference, $P<0.05$). Furthermore, oxidized LDL, which negatively regulates the bioavailability of NO, was reduced by 17% (102 ± 8 U/mL before versus 85 ± 7 U/mL after; $P<0.001$) in AIT but not CME (not shown) (group difference, $P<0.01$).

FLOW CHART

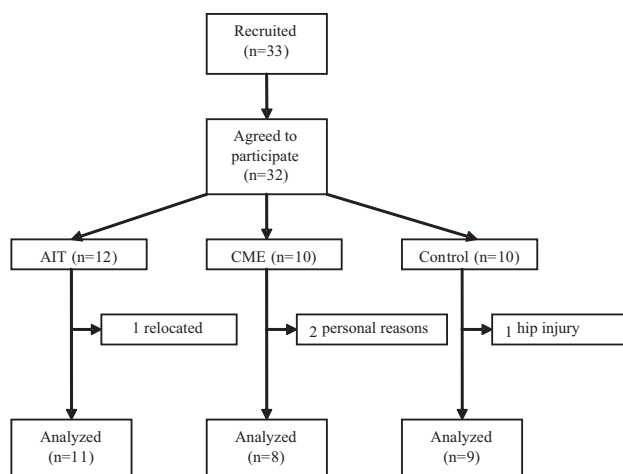


Figure 1. Flow chart of the study design.

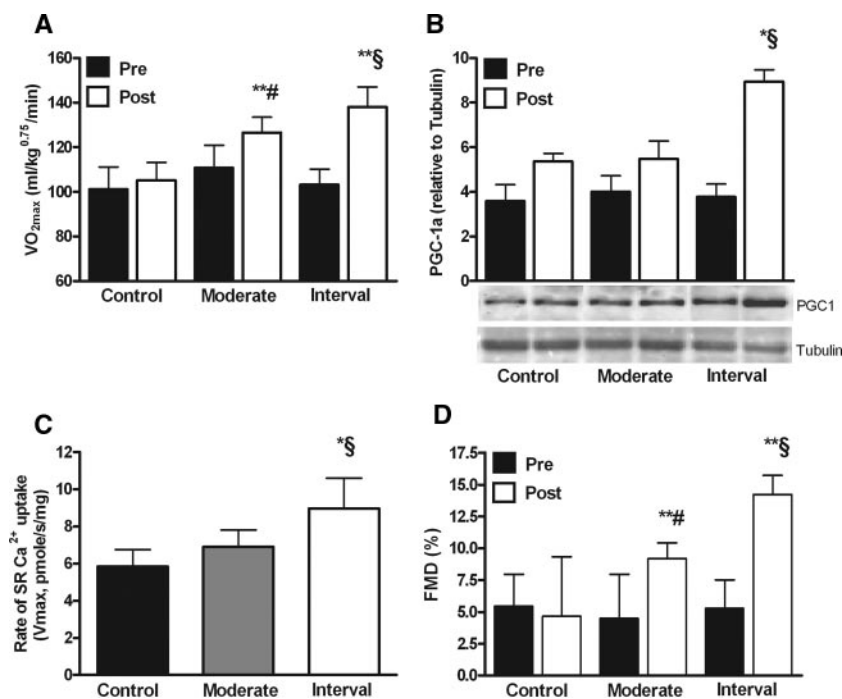


Figure 2. A, $\dot{V}O_{2\max}$. B, Expression of PGC-1 α in samples from the vastus lateralis muscle. C, Maximal rate of reuptake of Ca^{2+} into sarcoplasmic reticulum in the vastus lateralis muscle. D, Endothelial function measured as FMD of the brachial artery in humans. *Significantly different within each group from before to after ($P < 0.05$). **Significantly different within each group from before to after ($P < 0.01$). §Significantly different from the other groups ($P < 0.05$). #Different from control ($P < 0.05$).

Insulin Action in Skeletal Muscle and Fat Tissue

Because IR phosphorylation in skeletal muscle is an excellent surrogate measure of peripheral insulin sensitivity in obese and type 2 diabetic humans,^{17,18} phosphorylation of the IR β subunit in the presence of insulin was examined. Insulin induced a substantial increase (2.5- to 15-fold; $P < 0.001$; Figure 3A) in receptor phosphorylation (and thus activation) in the vastus lateralis muscle after AIT compared with the other groups ($P < 0.03$). In fat tissue, AIT induced a larger increase in receptor phosphorylation compared with the other groups ($P < 0.01$; Figure 3B).

FATP-1 and FAS

Endurance training did not affect the protein content of FATP-1, a fatty acid transporter, in the vastus lateralis muscle (data not shown). In contrast, FATP-1 levels decreased 3- to 4-fold in fat tissue after AIT but not CME (group difference, $P < 0.05$; Figure 3C). AIT consistently caused a more marked decrease in the protein content of FAS, a key lipogenic enzyme, in white adipose tissue compared with the other groups ($P < 0.01$; Figure 3D), suggesting reduced lipogenesis in this tissue by AIT but not CME.

Blood Analysis

AIT caused a significant improvement in fasting blood glucose compared with the other groups ($P < 0.05$; Table 2). Furthermore, insulin sensitivity and β -cell function appear to be mainly improved by AIT, as indicated by HOMA analysis (group difference, $P < 0.05$; Table 2). Moreover, high-density lipoprotein cholesterol was increased by $\approx 25\%$ after AIT ($P < 0.05$; Table 2) but remained unaltered in the other groups (group difference, $P = NS$). Consistent with improved insulin sensitivity by AIT, circulating adiponectin, an adipocyte-secreted hormone that is associated with improved insulin sensitivity and amelioration of the metabolic syndrome, was

increased ($P < 0.05$; Table 2). Similarly, adiponectin levels were increased by CME ($P < 0.05$; Table 2), perhaps because of a comparable decrease in visceral obesity as suggested by reduced waist circumference in patients undergoing either exercise program (Table 2). Neither training program changed the levels of triglycerides, insulin, microalbuminuria (Table 2), total cholesterol, LDL, C-peptide, or hemoglobin (data not shown).

Discussion

The present study emphasizes that exercise intensity was an important factor for improving aerobic capacity and reversing the risk factors of the metabolic syndrome, including endothelial function, insulin action, and lipogenesis, in individuals with the metabolic syndrome.

Aerobic Capacity

Of all established risk factors, low aerobic exercise capacity appears to be the strongest predictor of mortality.⁵ We demonstrated here that high-intensity exercise increased $\dot{V}O_{2\max}$ to a higher degree than moderate-intensity exercise in patients with the metabolic syndrome. Central O_2 delivery and peripheral O_2 use, in addition to skeletal muscle capacity, contribute to training-induced changes in $\dot{V}O_{2\max}$.¹³ Accordingly, AIT improved maximal stroke volume (measured as peak O_2 pulse) and Ca^{2+} cycling and mitochondrial capacity in skeletal muscle (as assessed by improved sarcoplasmic reticulum Ca^{2+} ATPase capacity and PGC-1 α levels in the vastus lateralis muscle) to a larger extent than CME.

Similar weight loss between exercise intensities and a larger total reduction of the cardiovascular risk factors that constitute the metabolic syndrome after AIT are in line with epidemiological observations suggesting that it may be more important to become fit than to lose weight per se.^{19,20} Moreover, although obesity and aerobic capacity are strong

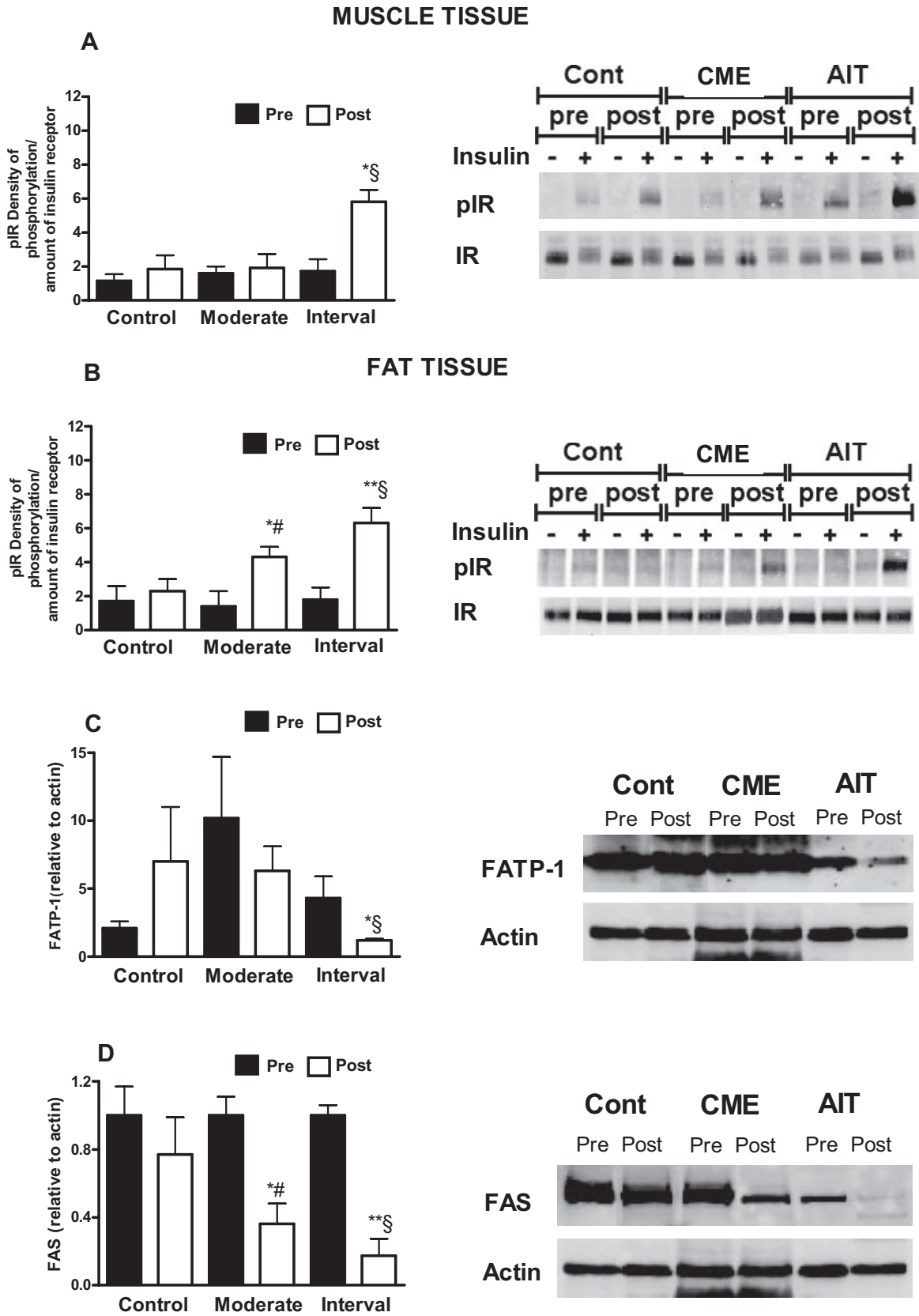


Figure 3. Insulin action in the vastus lateralis muscle (A) and fat tissue (B). C, Relative expression of FATP-1 in fat tissue. D, Relative expression of FAS in fat tissue. *Significantly different within each group from before to after ($P < 0.05$). **Significantly different within each group from before to after ($P < 0.01$). §Significantly different from the other groups ($P < 0.05$). #Different from control ($P < 0.05$). pIR indicates phosphorylated IR.

and independent prognostic markers for cardiovascular mortality, the link between aerobic capacity and mortality seems to be stronger.^{19,20} This suggests that it is more beneficial to target aerobic capacity before weight loss, although improvement in both risk factors probably would be ideal. However, larger prospective studies are needed to address this issue.

The main goal of the present study was to evaluate the effect of exercise intensity on the metabolic syndrome by subjecting patients to 2 different exercise regimens that differ solely by their level of intensity. The high-intensity exercise was set to 90% of Hfmax and performed as aerobic interval exercise because this training method has previously yielded the greatest improvement in aerobic capacity over a relatively short time in healthy individuals²¹ and in patients with coronary artery disease,⁸ intermittent claudication,²² and postinfarction heart failure.¹³ The rationale behind interval training is that most evidence suggests that it is the pumping capacity of the heart (ie, stroke volume) that limits $\dot{V}O_2$ max, and the interval design allows rest periods that enable the patients to complete short work periods at higher intensities, which thereby challenge the pumping ability of the heart more than what would be possible by lower intensities.

General agreement exists that we need better and more affordable prevention and treatment strategies to improve wide-scale health outcome and to slow the current epidemic of overweight to prevent the epidemic of metabolic syndrome from reaching global proportions and straining public health and the economy.²³ Furthermore, weight regulation has a complex nature, so the likelihood of a pharmacological solution is small.²⁴ In fact, no available drug is ideal at the present time for most patients with metabolic syndrome.²⁵ The present study suggests that exercise in general and AIT in particular are partly or fully able to reverse the metabolic syndrome, suggesting that this may be a promising treatment strategy. However, despite the results presented here, the interval protocol may not be readily acceptable to the general population of patients with the metabolic syndrome. On the other hand, an exercise intensity of 90% of Hfmax corresponds to ≈ 20 bpm below maximum. This implies that the patients would have tolerated higher exercise intensities (but with shorter durations) and that most patients walk “uphill” on the treadmill to avoid running and thereby reduce the risk of musculoskeletal injuries caused by the mechanical load at high running speeds. Interestingly, informal comments from the patients in the exercise groups indicate that AIT patients found it motivating to have a varied procedure to follow during each training session, whereas those in the CME group found it “quite boring” to walk continuously during the whole exercise period. To extend the clinical usefulness of the exercise training to those not having access to heart rate monitors, we recently asked patients with postinfarction heart failure to indicate the level of effort on a Borg scale after each interval or during continuous walking, ie, training protocols identical to those in the present study, and found that Borg scores of 17 ± 1 and 12 ± 1 to correspond to AIT and CME, respectively.¹³ Unpublished data from our laboratory confirm these numbers in both healthy and overweight individuals. To obtain the intended exercise intensity during home-based interval training, we normally instruct patients to exercise so

that they are breathing heavily and talking becomes uncomfortable during each interval without developing severe leg stiffness, and it is an absolute requirement that they should be able to perform 4-minute intervals in succession. These instructions were satisfactory in old patients with postinfarction heart failure¹³ and may therefore also be feasible for patients with the metabolic syndrome. These observations suggest that it may be possible to instruct patients to perform such training without monitoring heart rate.

Endothelial Function

High-intensity training improved endothelial function (FMD) more than continuous exercise. In keeping with the notion that exercise-induced improvement in vessel relaxation is mainly mediated by NO,²⁶ we observed no group differences in endothelium-independent relaxation in the brachial artery after administering nitroglycerine sublingually. Recently, Hambrecht et al²⁷ demonstrated 2-fold-higher endothelial NO synthase and 4-fold higher endothelial NO synthase Ser¹¹⁷⁷ phosphorylation levels in the left internal mammary artery after 4 weeks of exercise training in patients with stable coronary artery disease compared with sedentary counterparts. This suggests that the effect of AIT is mediated by improved NO bioavailability. Consistent with this hypothesis, AIT but not CME normalized the level of blood glucose, insulin sensitivity, and the amount of oxidized LDL, which directly influence NO bioavailability.²⁸ The reason for the differences in FMD between groups is not fully understood, but it seems reasonable to suggest that the low- and high-intensity training exercise programs affect shear stress on the walls of blood vessels differently during exercise training and that this yields differences in molecular responses.

Blood Pressure

CME and AIT reduced systolic and diastolic blood pressures by ≈ 10 and 6 mm Hg, respectively. On the basis of a meta-analysis of 1 million adults, a blood pressure lowering of this magnitude would, in the long term, be associated with $\approx 40\%$ and 30% decreases in the risks of premature deaths resulting from stroke and ischemic heart disease.²⁹

Insulin Action

Physical activity and a healthy lifestyle promote insulin sensitivity, whereas a sedentary lifestyle and a Western diet are associated with insulin resistance. In our study, AIT promoted insulin sensitivity and β -cell function more than CME. Increased insulin sensitivity and β -cell function after exercise have been proposed to result from peripherally enhanced insulin response and signaling.³⁰ Consistently, exercise, particularly high-intensity training, improved IR phosphorylation (and activation) by insulin in muscle and fat tissue. The mechanism for improved insulin action in muscle by AIT is not clear. However, exercise is generally known to promote insulin action in muscle by decreasing the intracellular accumulation of triglycerides and promoting fatty acid oxidation.³¹ Consistently, AIT increased mitochondrial biogenesis in skeletal muscle of patients with the metabolic syndrome. In agreement with recent reports,³² AIT did not alter fatty acid transport into muscle, as indicated by intact

FATP-1 levels. In contrast, the larger improvement in IR activation by high-intensity training in fat tissue was associated with a stronger reduction in fatty acid uptake and lipogenesis in this tissue, as suggested by reduced FATP-1 and FAS levels, respectively. Although the effect of exercise on visceral adiposity per se was not measured, decreased lipogenesis, together with reduced waist circumference and body weight and in parallel with increased circulating adiponectin levels in exercise, suggests decreased intraabdominal visceral obesity. Taken together, the data suggest that both exercise programs decreased body weight but that AIT was particularly beneficial for decreasing fatty acid transport into the adipose tissue and promoting the suppressive effect of insulin on lipogenesis in this tissue. Together with a reduction in plasma oxidized LDL levels, decreased lipogenesis in fat tissue by AIT demonstrates larger improvement in the overall fat metabolism in patients with the metabolic syndrome by high-intensity training.

The positive effect of AIT on fasting glucose levels and insulin sensitivity may explain some of the group differences in these parameters. The slight worsening in CME with respect to these variables is not fully understood, especially because no diet alterations occurred during the 16-week intervention period. However, this suggests that CME, in contrast to AIT, did not produce enough stimulus to revert the phenotype.

Study Limitations

The number of patients in our study was small, and information on the safety and injury risk of this training protocol in the general population is not known. However, in a number of studies in our laboratory,^{8,13,21,22} we have observed only 2 knee injuries in extremely overweight patients. These data are provocative but should encourage larger multicenter studies.

Conclusions

The present study demonstrates that high-intensity exercise training is superior to moderate-intensity training in reversing risk factors of the metabolic syndrome. The closely supervised training regimens and the comparable training volumes between the 2 exercise groups are strong features of our study and demonstrate the importance of exercise training in reducing the risks of metabolic syndrome. Exercise training, especially high intensity, appears to be highly beneficial in preventing the metabolic syndrome relative to any other currently known interventions. These findings may have important implications for exercise training in rehabilitation programs. Although multicenter prospective studies using exercise with high relative intensity to treat patients with the metabolic syndrome are needed to advance our conclusions, we propose that high-intensity exercise training programs may yield more favorable results than programs with low to moderate intensities.

Sources of Funding

The present study was supported by grants from the Norwegian Council of Cardiovascular Disease, the Norwegian Research Council (Funding for Outstanding Young Investigators; Dr Wisløff), Funds for Cardiovascular and Medical Research at St Olav's University Hospital, Trondheim, and the Torstein Erbo's Foundation, Trond-

heim. This work also was supported by grants from the National Institutes of Health (DK 54254) and the US Department of Agriculture (USDA 2006-38903-02315). The funding organizations had no role in the design and conduct of the study; in the collection, analysis, and interpretation of the data; or in the preparation, review, or approval of the manuscript.

Disclosures

None.

References

1. Grundy SM, Brewer HB Jr, Cleeman JI, Smith SC Jr, Lenfant C. Definition of metabolic syndrome: report of the National Heart, Lung, and Blood Institute/American Heart Association conference on scientific issues related to definition. *Circulation*. 2004;109:433–438.
2. James PT, Rigby N, Leach R. The obesity epidemic, metabolic syndrome and future prevention strategies. *Eur J Cardiovasc Prev Rehabil*. 2004; 11:3–8.
3. Lakka HM, Laaksonen DE, Lakka TA, Niskanen LK, Kumpusalo E, Tuomilehto J, Salonen JT. The metabolic syndrome and total and cardiovascular disease mortality in middle-aged men. *JAMA*. 2002;288: 2709–2716.
4. Halcox JP, Schenke WH, Zalos G, Mincemoyer R, Prasad A, Waclawiw MA, Nour KR, Quyyumi AA. Prognostic value of coronary vascular endothelial dysfunction. *Circulation*. 2002;106:653–658.
5. Myers J, Prakash M, Froelicher V, Do D, Partington S, Atwood JE. Exercise capacity and mortality among men referred for exercise testing. *N Engl J Med*. 2002;346:793–801.
6. WHO. *Report of a WHO Consultation: Definition of the Metabolic Syndrome, Diagnosis, and Classification of Diabetes Mellitus and Its Complications, I: Diagnosis and Classification of Diabetes Mellitus*. Geneva, Switzerland: World Health Organization, Department of Non-communicable Disease Surveillance; 1999.
7. Andersen LF, Solvoll K, Johansson LR, Salminen I, Aro A, Drevon CA. Evaluation of a food frequency questionnaire with weighed records, fatty acids, and alpha-tocopherol in adipose tissue and serum. *Am J Epidemiol*. 1999;150:75–87.
8. Rognmo O, Hetland E, Helgerud J, Hoff J, Slordahl SA. High intensity aerobic interval exercise is superior to moderate intensity exercise for increasing aerobic capacity in patients with coronary artery disease. *Eur J Cardiovasc Prev Rehabil*. 2004;11:216–222.
9. Corretti MC, Anderson TJ, Benjamin EJ, Celermajer D, Charbonneau F, Creager MA, Deanfield J, Drexler H, Gerhard-Herman M, Herrington D, Vallance P, Vita J, Vogel R. Guidelines for the ultrasound assessment of endothelial-dependent flow-mediated vasodilation of the brachial artery: a report of the International Brachial Artery Reactivity Task Force. *J Am Coll Cardiol*. 2002;39:257–265.
10. Schjerve IE, Tyldum GA, Tjønnå AE, Stolen TO, Loennechen JP, Hansen HE, Haram PM, Heinrich G, Bye A, Najjar SM, Smith GL, Slordahl SA, Kemi OJ, Wisloff U. Both aerobic endurance and strength training programs improve cardiovascular health in obese adults. *Clin Sci (Lond)*. March 13, 2008. DOI: 10.1042/CS20070332. Available at: <http://www.clinsci.org>. Accessed March 13, 2008.
11. Pyke KE, Tschakovsky ME. The relationship between shear stress and flow-mediated dilatation: implications for the assessment of endothelial function. *J Physiol*. 2005;568:357–369.
12. Kemi OJ, Ceci M, Condorelli G, Smith GL, Wisloff U. Myocardial sarcoplasmic reticulum Ca²⁺ ATPase function is increased by aerobic interval training. *Eur J Cardiovasc Prev Rehabil*. 2008;15:145–148.
13. Wisloff U, Stoylen A, Loennechen JP, Bruvold M, Rognmo O, Haram PM, Tjønnå AE, Helgerud J, Slordahl SA, Lee SJ, Videm V, Bye A, Smith GL, Najjar SM, Ellingsen O, Skjaerpe T. Superior cardiovascular effect of aerobic interval training versus moderate continuous training in heart failure patients: a randomized study. *Circulation*. 2007;115: 3086–3094.
14. Machin D, Campbell M, Fayers P, Pinol A. *Sample Size Tables for Clinical Studies*. Oxford, UK: Blackwell Science; 1997.
15. Vickers AJ, Altman DG. Statistics notes: analysing controlled trials with baseline and follow up measurements. *BMJ*. 2001;323:1123–1124.
16. Wisloff U, Najjar SM, Ellingsen O, Haram PM, Swoap S, Al-Share Q, Fernstrom M, Rezaei K, Lee SJ, Koch LG, Britton SL. Cardiovascular risk factors emerge after artificial selection for low aerobic capacity. *Science*. 2005;307:418–420.

17. Caro JF, Sinha MK, Raju SM, Ittoop O, Pories WJ, Flickinger EG, Meelheim D, Dohm GL. Insulin receptor kinase in human skeletal muscle from obese subjects with and without noninsulin dependent diabetes. *J Clin Invest*. 1987;79:1330–1337.
18. Nolan JJ, Freidenberg G, Henry R, Reichart D, Olefsky JM. Role of human skeletal muscle insulin receptor kinase in the in vivo insulin resistance of noninsulin-dependent diabetes mellitus and obesity. *J Clin Endocrinol Metab*. 1994;78:471–477.
19. Blair SN, Brodney S. Effects of physical inactivity and obesity on morbidity and mortality: current evidence and research issues. *Med Sci Sports Exerc*. 1999;31:646–662.
20. Vatten LJ, Nilsen TI, Romundstad PR, Droyvold WB, Holmen J. Adiposity and physical activity as predictors of cardiovascular mortality. *Eur J Cardiovasc Prev Rehabil*. 2006;13:909–915.
21. Helgerud J, Hoydal K, Wang E, Karlsen T, Berg P, Bjerkaas M, Simonsen T, Helgesen C, Hjorth N, Bach R, Hoff J. Aerobic high-intensity intervals improve $\dot{V}O_2$ max more than moderate training. *Med Sci Sports Exerc*. 2007;39:665–671.
22. Stordahl SA, Wang E, Hoff J, Kemi OJ, Amundsen BH, Helgerud J. Effective training for patients with intermittent claudication. *Scand Cardiovasc J*. 2005;39:244–249.
23. Steinberger J, Daniels SR. Obesity, insulin resistance, diabetes, and cardiovascular risk in children: an American Heart Association scientific statement from the Atherosclerosis, Hypertension, and Obesity in the Young Committee (Council on Cardiovascular Disease in the Young) and the Diabetes Committee (Council on Nutrition, Physical Activity, and Metabolism). *Circulation*. 2003;107:1448–1453.
24. Kopelman PG, Grace C. New thoughts on managing obesity. *Gut*. 2004;53:1044–1053.
25. Kopelman PG. Clinical treatment of obesity: are drugs and surgery the answer? *Proc Nutr Soc*. 2005;64:65–71.
26. Furchgott RF, Zawadzki JV. The obligatory role of endothelial cells in the relaxation of arterial smooth muscle by acetylcholine. *Nature*. 1980;288:373–376.
27. Hambrecht R, Adams V, Erbs S, Linke A, Krankel N, Shu Y, Baithier Y, Gielen S, Thiele H, Gummert JF, Mohr FW, Schuler G. Regular physical activity improves endothelial function in patients with coronary artery disease by increasing phosphorylation of endothelial nitric oxide synthase. *Circulation*. 2003;107:3152–3158.
28. Davignon J, Ganz P. Role of endothelial dysfunction in atherosclerosis. *Circulation*. 2004;109(suppl):III-27–III-32.
29. Lewington S, Clarke R, Qizilbash N, Peto R, Collins R. Age-specific relevance of usual blood pressure to vascular mortality: a meta-analysis of individual data for one million adults in 61 prospective studies. *Lancet*. 2002;360:1903–1913.
30. Koval JA, Maezono K, Patti ME, Pendergrass M, DeFronzo RA, Mandarino LJ. Effects of exercise and insulin on insulin signaling proteins in human skeletal muscle. *Med Sci Sports Exerc*. 1999;31:998–1004.
31. Bonen A, Dohm GL, van Loon LJ. Lipid metabolism, exercise and insulin action. *Essays Biochem*. 2006;42:47–59.
32. Talanian JL, Galloway SD, Heigenhauser GJ, Bonen A, Spriet LL. Two weeks of high-intensity aerobic interval training increases the capacity for fat oxidation during exercise in women. *J Appl Physiol*. 2007;102:1439–1447.

CLINICAL PERSPECTIVE

In recent years, consensus has been growing that physical inactivity accelerates the development of metabolic syndrome and that the level of aerobic fitness predicts survival in a metabolic syndrome population even when other traditional risk factors are present. However, the level and format of exercise that may yield optimal health benefits remain in dispute. In the present study, we sought to determine whether exercise intensity is critical in improving aerobic fitness and endothelial function and in reducing the degree of the metabolic syndrome and cardiovascular risk factors in patients with established metabolic syndrome. Patients \approx 40 to 60 years of age of both sexes either were subjected to high-intensity aerobic interval training or moderate continuous exercise or received standard advice on physical activity. The protocols were made isocaloric so that only exercise intensity differed between the 2 intervention groups. This study demonstrates that high-intensity training relative to the individual's aerobic fitness level is feasible even in overweight patients with the metabolic syndrome who have several cardiovascular risk factors. It also shows that the intensity of exercise is important for reversing factors relating to the metabolic syndrome, improving aerobic capacity, and improving endothelial function in patients with metabolic syndrome. Although the safety of high-intensity exercise has yet to be assessed, these results suggest that exercise intensity should be seriously considered by healthcare professionals and policy makers.

Go to <http://cme.ahajournals.org> to take the CME quiz for this article.

Aerobic Interval Training Versus Continuous Moderate Exercise as a Treatment for the Metabolic Syndrome: A Pilot Study

Arnt Erik Tjønnå, Sang Jun Lee, Øivind Rognmo, Tomas O. Stølen, Anja Bye, Per Magnus Haram, Jan Pål Loennechen, Qusai Y. Al-Share, Eirik Skogvoll, Stig A. Slørdahl, Ole J. Kemi, Sonia M. Najjar and Ulrik Wisløff

Circulation. 2008;118:346-354; originally published online July 7, 2008;
doi: 10.1161/CIRCULATIONAHA.108.772822

Circulation is published by the American Heart Association, 7272 Greenville Avenue, Dallas, TX 75231
Copyright © 2008 American Heart Association, Inc. All rights reserved.
Print ISSN: 0009-7322. Online ISSN: 1524-4539

The online version of this article, along with updated information and services, is located on the
World Wide Web at:

<http://circ.ahajournals.org/content/118/4/346>

Permissions: Requests for permissions to reproduce figures, tables, or portions of articles originally published in *Circulation* can be obtained via RightsLink, a service of the Copyright Clearance Center, not the Editorial Office. Once the online version of the published article for which permission is being requested is located, click Request Permissions in the middle column of the Web page under Services. Further information about this process is available in the [Permissions and Rights Question and Answer](#) document.

Reprints: Information about reprints can be found online at:
<http://www.lww.com/reprints>

Subscriptions: Information about subscribing to *Circulation* is online at:
<http://circ.ahajournals.org/subscriptions/>