

## ORIGINAL ARTICLE

# Efficacy and Safety of Evolocumab in Reducing Lipids and Cardiovascular Events

Marc S. Sabatine, M.D., M.P.H., Robert P. Giugliano, M.D., Stephen D. Wiviott, M.D., Frederick J. Raal, M.B., B.Ch., M.Med., Ph.D., Dirk J. Blom, M.B., Ch.B., M.Med., Ph.D., Jennifer Robinson, M.D., M.P.H., Christie M. Ballantyne, M.D., Ransi Somaratne, M.D., Jason Legg, Ph.D., Scott M. Wasserman, M.D., Robert Scott, M.D., Michael J. Koren, M.D., and Evan A. Stein, M.D., Ph.D., for the Open-Label Study of Long-Term Evaluation against LDL Cholesterol (OSLER) Investigators

## ABSTRACT

**BACKGROUND**

From the Thrombolysis in Myocardial Infarction (TIMI) Study Group, Division of Cardiovascular Medicine, Brigham and Women's Hospital, and the Department of Medicine, Harvard Medical School, Boston (M.S.S., R.P.G., S.D.W.); the Carbohydrate and Lipid Metabolism Research Unit, Faculty of Health Sciences, University of the Witwatersrand, Johannesburg (F.J.R.), and the Division of Lipidology, Department of Medicine, University of Cape Town, Cape Town (D.J.B.) — both in South Africa; the Departments of Epidemiology and Medicine, College of Public Health, University of Iowa, Iowa City (J.R.); the Sections of Cardiovascular Research and Cardiology, Department of Medicine, Baylor College of Medicine, and the Center for Cardiovascular Disease Prevention, Houston Methodist DeBakey Heart and Vascular Center, Houston (C.M.B.); Amgen, Thousand Oaks, CA (R. Somaratne, J.L., S.M.W., R. Scott); Jacksonville Center for Clinical Research, Jacksonville, FL (M.J.K.); and the Metabolic and Atherosclerosis Research Center, Cincinnati (E.A.S.). Address reprint requests to Dr. Sabatine at the TIMI Study Group, Cardiovascular Division, Brigham and Women's Hospital, 75 Francis St., Boston, MA 02115, or at msabatine@partners.org; or to Dr. Stein at the Metabolic and Atherosclerosis Research Center, 5355 Medpace Way, Cincinnati, OH 45225, or at esteinmrl@aol.com.

Evolocumab, a monoclonal antibody that inhibits proprotein convertase subtilisin-kexin type 9 (PCSK9), significantly reduced low-density lipoprotein (LDL) cholesterol levels in short-term studies. We conducted two extension studies to obtain longer-term data.

**METHODS**

In two open-label, randomized trials, we enrolled 4465 patients who had completed 1 of 12 phase 2 or 3 studies (“parent trials”) of evolocumab. Regardless of study-group assignments in the parent trials, eligible patients were randomly assigned in a 2:1 ratio to receive either evolocumab (140 mg every 2 weeks or 420 mg monthly) plus standard therapy or standard therapy alone. Patients were followed for a median of 11.1 months with assessment of lipid levels, safety, and (as a prespecified exploratory analysis) adjudicated cardiovascular events including death, myocardial infarction, unstable angina, coronary revascularization, stroke, transient ischemic attack, and heart failure. Data from the two trials were combined.

**RESULTS**

As compared with standard therapy alone, evolocumab reduced the level of LDL cholesterol by 61%, from a median of 120 mg per deciliter to 48 mg per deciliter ( $P < 0.001$ ). Most adverse events occurred with similar frequency in the two groups, although neurocognitive events were reported more frequently in the evolocumab group. The risk of adverse events, including neurocognitive events, did not vary significantly according to the achieved level of LDL cholesterol. The rate of cardiovascular events at 1 year was reduced from 2.18% in the standard-therapy group to 0.95% in the evolocumab group (hazard ratio in the evolocumab group, 0.47; 95% confidence interval, 0.28 to 0.78;  $P = 0.003$ ).

**CONCLUSIONS**

During approximately 1 year of therapy, the use of evolocumab plus standard therapy, as compared with standard therapy alone, significantly reduced LDL cholesterol levels and reduced the incidence of cardiovascular events in a prespecified but exploratory analysis. (Funded by Amgen; OSLE1 and OSLE2 ClinicalTrials.gov numbers, NCT01439880 and NCT01854918.)

This article was published on March 15, 2015, at NEJM.org.

N Engl J Med 2015;372:1500-9.

DOI: 10.1056/NEJMoa1500858

Copyright © 2015 Massachusetts Medical Society.

**R**EDUCTION IN LOW-DENSITY LIPOPROTEIN (LDL) cholesterol levels has proved to be highly effective in reducing rates of major cardiovascular events in numerous large outcome trials.<sup>1-3</sup> For this reason, LDL cholesterol reduction has been incorporated into practice guidelines as a fundamental means of reducing cardiovascular morbidity and mortality.<sup>4-7</sup>

During the past 3 years, monoclonal antibodies that inhibit proprotein convertase subtilisin-kexin type 9 (PCSK9) have emerged as a new class of drugs that very effectively lower LDL cholesterol levels.<sup>8</sup> One of the members of this class is evolocumab, a fully human monoclonal antibody that typically achieves approximately a 60% reduction in LDL cholesterol levels when administered at the doses that were studied in phase 3 trials.<sup>9-13</sup>

On completing a trial of evolocumab (parent trial), patients could enroll into one of two longer-term extension trials, designated Open-Label Study of Long-Term Evaluation against LDL Cholesterol 1 (OSLER-1), for patients completing phase 2 trials, and OSLER-2, for those completing phase 3 trials. The OSLER-1 and OSLER-2 trials had as their primary goal the gathering of longer-term data on safety, side-effect profile, and LDL cholesterol reduction and also included a prespecified exploratory analysis on adjudicated cardiovascular outcomes. Here, we report on the combined results of the OSLER-1 and OSLER-2 trials.

## METHODS

### STUDY DESIGN AND OVERSIGHT

The OSLER-1 trial was an open-label, randomized, controlled study conducted at 190 centers that participated in at least one of five phase 2 studies of evolocumab.<sup>14-19</sup> Analogously, the OSLER-2 trial was an open-label, randomized, controlled study conducted at 305 centers that participated in at least one of seven phase 3 studies of evolocumab (Table 1).<sup>9-13,20,21</sup>

The protocols for the OSLER-1 and OSLER-2 trials were approved by the relevant ethics committee at each participating site and are available with the full text of this article at NEJM.org. Amgen sponsored and designed the two trials and was responsible for data collection and analysis. The first draft of the manuscript was written by the first and last authors. All the coauthors

participated in subsequent revisions of the manuscript. The academic authors had full access to the data and vouch for their accuracy and completeness and for the analyses as presented and for the fidelity of this report to the trial protocols. The first and last authors made the decision to submit the manuscript for publication.

### PATIENTS

There was variation in the clinical characteristics of the patients enrolled in the 12 parent studies (Table 1). Patients who had completed one of the parent studies could enroll in one of the OSLER extension studies, provided that they did not have an adverse event that led to the discontinuation of a study drug during the parent trial, did not have an unstable medical condition (in the judgment of the investigator), and were not expected to need unblinded lipid measurements or adjustment of background lipid-regulating therapy during the first 12 weeks of participation in the OSLER trials. All patients provided written informed consent before enrollment in the extension study.

### RANDOMIZATION, STUDY TREATMENT, AND FOLLOW-UP

Regardless of the study-group assignment in the parent study, eligible patients were randomly assigned at the last visit in the parent study, or as soon as possible thereafter, to receive either evolocumab plus standard therapy (evolocumab group) or standard therapy alone (standard-therapy group) in a 2:1 ratio. Randomization was performed centrally with the use of an interactive voice-response or Web-response system, with stratification in OSLER-1 according to the study-group assignment in the parent trial and in OSLER-2 according to the parent trial and study-drug dose frequency in the parent trial.

Evolocumab was administered subcutaneously at a dose of 420 mg once a month in OSLER-1 and, on the basis of patient choice, at a dose of either 140 mg every 2 weeks or 420 mg once a month in OSLER-2. Both regimens have been shown to reduce LDL cholesterol levels by approximately 60% in this patient population.<sup>9-13</sup> All patients, investigators, and care providers were aware of the randomized treatment assignments; no placebo was used for the standard-therapy group. Standard-of-care background therapy in the two groups was based on local guidelines for the treatment of LDL cholesterol.

Table 1. Features of the Parent Trials.*			
Trial	No. of Patients Enrolled in Parent Trial†	No. of Patients Enrolled in OSLER Trials	Patient Population
<b>Phase 2‡</b>			
MENDEL-1 <sup>15</sup>	406	300	LDL cholesterol level, $\geq 100$ and $< 190$ mg/dl; no background antilipid therapy
LAPLACE-TIMI 57 <sup>14</sup>	629	530	LDL cholesterol level, $\geq 85$ mg/dl while receiving statin with or without ezetimibe
GAUSS-1 <sup>17</sup>	157	128	Statin-intolerant; LDL cholesterol level, $\geq 100$ mg/dl
RUTHERFORD-1 <sup>16</sup>	167	147	Heterozygous familial hypercholesterolemia; LDL cholesterol level, $\geq 100$ mg/dl while receiving statin with or without ezetimibe
YUKAWA-1 <sup>19</sup>	307	219	High-risk patients in Japan; LDL cholesterol level, $\geq 116$ mg/dl while receiving statin
<b>Phase 3§</b>			
MENDEL-2 <sup>11</sup>	614	378	LDL cholesterol level, $\geq 100$ and $< 190$ mg/dl; no background antilipid therapy
LAPLACE-2 <sup>10</sup>	1896	1382	LDL cholesterol level, $\geq 80$ mg/dl (intensive statin at screening), $\geq 100$ mg/dl (nonintensive statin at screening), or $\geq 150$ mg/dl (no statin at screening); moderate- or high-intensity statin with or without ezetimibe
GAUSS-2 <sup>12</sup>	307	254	Statin-intolerant patients; LDL cholesterol level, $\geq 100$ and $< 190$ mg/dl
RUTHERFORD-2 <sup>13</sup>	329	293	Heterozygous familial hypercholesterolemia; LDL cholesterol level, $\geq 100$ mg/dl while receiving statin with or without ezetimibe
DESCARTES <sup>9</sup>	901	612	LDL cholesterol level, $\geq 75$ mg/dl while receiving statin with or without ezetimibe
THOMAS-1 <sup>20</sup>	149	112	LDL cholesterol level, $> 85$ mg/dl while receiving statin
THOMAS-2 <sup>21</sup>	164	110	LDL cholesterol level, $> 85$ mg/dl while receiving statin

\* To convert the values for low-density lipoprotein (LDL) cholesterol to millimoles per liter, multiply by 0.02586.

† Included in this category is the number of patients who underwent randomization and received at least one dose of a study drug.

‡ Patients who were enrolled in phase 2 parent trials and who agreed to participate in the extension study were enrolled in OSLER-1.

§ Patients who were enrolled in phase 3 parent trials and who agreed to participate in the extension study were enrolled in OSLER-2.

To avoid inadvertent unblinding of the parent study, lipid results from the central laboratory were unblinded only after the week 12 visit in the OSLER trials. Adjustments to background lipid-lowering therapies were discouraged. The study-visit schedules were similar in OSLER-1 and OSLER-2. Common to the two trials, patients were to have in-person clinic visits on day 1 and then quarterly at weeks 12, 24, 36, and 48. At other time points, patients in the evolocumab group had in-person visits, whereas patients in the standard-therapy group had telephone contact only.

The trial protocols specified that randomized treatment was to conclude at week 56 in OSLER-1 and at week 48 in OSLER-2. After the end of randomized treatment, all patients were to receive open-label evolocumab for longer-term, nonrandomized assessment of efficacy and safety.

#### END POINTS

The primary end point in the two trials was the incidence of adverse events. Additional safety end points included serious adverse events, adverse events leading to the discontinuation of the study drug (for patients in the evolocumab group), abnormalities in creatine kinase levels and liver-function testing, and the development of binding and neutralizing antibodies against evolocumab, which were assayed as reported previously.<sup>22</sup>

The secondary end point was the percent change in the LDL cholesterol level. Other efficacy lipid measurements included non-high-density lipoprotein (HDL) cholesterol, total cholesterol, triglycerides, HDL cholesterol, apolipoproteins A1 and B, and lipoprotein(a). Lipids were measured at a central laboratory (Medpace Reference Laboratories, Cincinnati, and Leuven, Belgium) after

a fast of at least 9 hours. The LDL cholesterol level was calculated with the use of the Friedewald formula.<sup>23</sup>

A prespecified exploratory outcome was the incidence of adjudicated cardiovascular events, which was ascertained over the course of the study. (Definitions are provided in the Methods section in the Supplementary Appendix, available at NEJM.org.) Cardiovascular events included death, coronary events (myocardial infarction, unstable angina requiring hospitalization, or coronary revascularization), cerebrovascular events (stroke or transient ischemic attack), and heart failure requiring hospitalization. Potential cardiovascular events were adjudicated by the central clinical-events committee at the Thrombolysis in Myocardial Infarction (TIMI) Study Group in Boston, whose members were unaware of treatment assignments. All cardiovascular events were combined in an exploratory composite analysis that was based on the events that were prespecified in the trial protocols. In addition, all cardiovascular end points except for heart failure were combined into a post hoc composite of major adverse cardiovascular events.

#### STATISTICAL ANALYSIS

The timing of the analysis in this report was triggered by a planned submission of a biologics license application to the Food and Drug Administration. The authors decided to present these data to the scientific community at the next major scientific meeting. In anticipation of that meeting, the data were updated with cardiovascular outcomes that were based on adjudicated data through January 21, 2015, along with demographic, lipid, and safety data that were based on cleaned data through October 31, 2014.

The data from the OSLER-1 and OSLER-2 trials were combined into a single analysis set. Data for patients were censored at the start of the uncontrolled period in each study. Lipid measurements were summarized with the use of means or medians, and treatment differences were tested with the use of the Wilcoxon rank-sum test without adjustment for multiplicity. We used the Kaplan–Meier method to estimate time-to-event cumulative incidence on an intention-to-treat basis. Safety was described according to the incidence of adverse events. The minimum LDL cholesterol category for a patient was determined by the minimum value observed in the randomized, con-

trolled period of the studies. We used the log-rank test to analyze the difference in cumulative incidence curves for cardiovascular events. Hazard ratios were estimated with the use of Cox proportional-hazard models without stratification. Statistical analyses were performed with the use of SAS software, version 9.3, and R software, version 3.0.3.

---

## RESULTS

---

#### PATIENTS

From October 2011 through June 2014, we enrolled a total of 4465 patients in the OSLER program (1324 patients in OSLER-1 and 3141 patients in OSLER-2), which represented 74.1% of eligible patients in the parent studies (Table 1). Of the 4465 patients, 2976 were randomly assigned to receive evolocumab plus standard therapy and 1489 to receive standard therapy alone (Fig. S1 in the Supplementary Appendix). The median duration of follow-up was 11.1 months (interquartile range, 11.0 to 12.8), for a total of 4219.4 patient-years of follow-up.

The mean age of the patients was 58 years, and 80.4% had at least one cardiovascular risk factor (Table 2). A total of 3128 patients (70.1%) were receiving statin therapy at the start of the OSLER trials. Premature permanent discontinuation of evolocumab occurred in 7.2% of patients. Changes in open-label statin therapy were infrequent (for details, see the Results section in the Supplementary Appendix).

#### LIPID CHANGES

The median baseline LDL cholesterol, before randomization into a parent study, was 120 mg per deciliter. At the week 12 visit in the OSLER trials, evolocumab, as compared with standard therapy, reduced the LDL cholesterol level by 61% (95% confidence interval [CI], 59 to 63;  $P < 0.001$ ), for a mean absolute reduction of 73 mg per deciliter to a median of 48 mg per deciliter. Data were similar in the OSLER-1 and OSLER-2 trials (Table S1 in the Supplementary Appendix). The reduction in LDL cholesterol levels with evolocumab was consistent over time (Fig. 1). At 12 weeks, the LDL cholesterol level was reduced to 100 mg per deciliter or less in 90.2% of patients and to 70 mg per deciliter or less in 73.6% of patients in the evolocumab group, as compared with 26.0% and 3.8%, respectively, in the standard-therapy group.

**Table 2. Clinical Characteristics of the Patients at Baseline.\***

Characteristic	Evolocumab Group (N=2976)	Standard-Therapy Group (N=1489)
Mean age $\pm$ SD — yr	57.8 $\pm$ 11.0	58.2 $\pm$ 10.9
Male sex — no. (%)	1490 (50.1)	765 (51.4)
White race — no. (%) <sup>†</sup>	2559 (86.0)	1267 (85.1)
Region		
North America	1402 (47.1)	705 (47.3)
Europe	1205 (40.5)	597 (40.1)
Asia Pacific or South Africa	369 (12.4)	187 (12.6)
Cardiovascular risk factor — no. (%)	2379 (79.9)	1211 (81.3)
Hypertension	1545 (51.9)	777 (52.2)
Diabetes mellitus	382 (12.8)	217 (14.6)
Metabolic syndrome	1035 (34.8)	475 (31.9)
Current cigarette use	465 (15.6)	222 (14.9)
Family history of premature coronary artery disease <sup>‡</sup>	724 (24.3)	362 (24.3)
Known familial hypercholesterolemia	289 (9.7)	151 (10.1)
Moderately high risk or high risk on NCEP <sup>§</sup>	1332 (44.8)	693 (46.5)
Coronary artery disease — no. (%)		
Any	589 (19.8)	307 (20.6)
Myocardial infarction	276 (9.3)	141 (9.5)
Percutaneous coronary intervention	325 (10.9)	170 (11.4)
Coronary-artery bypass grafting	185 (6.2)	110 (7.4)
Cerebrovascular or peripheral-artery disease — no. (%)		
Any	266 (8.9)	141 (9.5)
Carotid- or vertebral-artery disease	94 (3.2)	62 (4.2)
Stroke	81 (2.7)	37 (2.5)
Peripheral-artery disease	85 (2.9)	50 (3.4)
Medication use — no. (%)		
Statin <sup>¶</sup>		
Any	2073 (69.7)	1055 (70.9)
High-intensity	795 (26.7)	415 (27.9)
Moderate-intensity	1034 (34.7)	522 (35.1)
Low-intensity	240 (8.1)	118 (7.9)
Unknown	4 (0.1)	0
Ezetimibe	376 (12.6)	229 (15.4)
Median lipid measure at baseline in parent study (IQR) — mg/dl		
LDL cholesterol	120 (97–148)	121 (97–151)
Total cholesterol	202 (175–234)	205 (174–235)
HDL cholesterol	51 (42–62)	51 (42–62)
Triglycerides	120 (89–165)	119 (89–167)

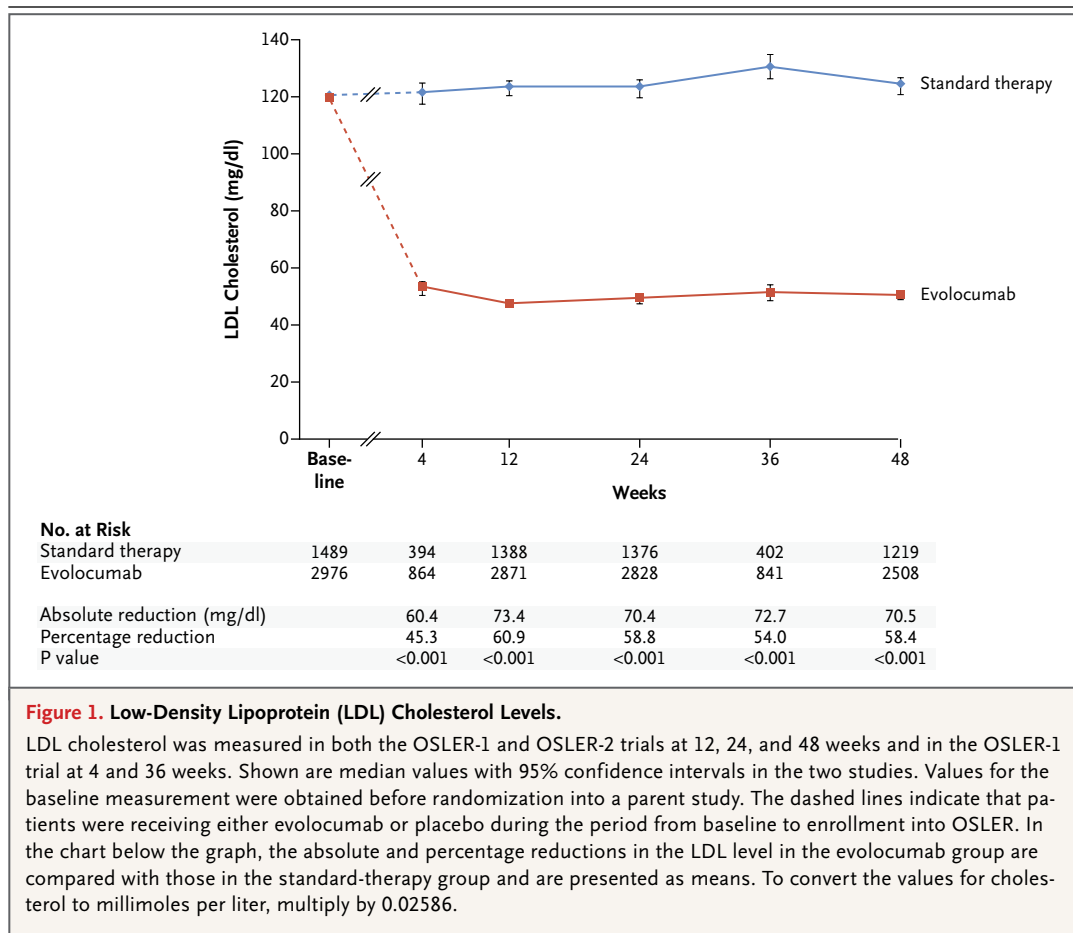
\* Baseline characteristics are based on data that were obtained at the start of the parent study; values for statin use and intensity are based on data from the start of the OSLER program. There were no significant differences between the two groups at baseline. To convert the values for triglycerides to millimoles per liter, multiply by 0.01129. HDL denotes high-density lipoprotein, and IQR interquartile range.

<sup>†</sup> Race was self-reported.

<sup>‡</sup> A family history of premature coronary artery disease was defined as the presence of coronary artery disease in a first-degree male relative 55 years of age or younger or in a first-degree female relative 65 years of age or younger.

<sup>§</sup> According to the criteria of the National Cholesterol Education Program (NCEP), moderately high or high risk is defined as coronary heart disease, coronary heart disease equivalent, or two or more cardiovascular risk factors with an estimated 10-year risk of cardiovascular events of 10% or more.

<sup>¶</sup> The intensity of statin therapy was defined according to recent guidelines.<sup>4</sup>



**Figure 1. Low-Density Lipoprotein (LDL) Cholesterol Levels.**

LDL cholesterol was measured in both the OSLER-1 and OSLER-2 trials at 12, 24, and 48 weeks and in the OSLER-1 trial at 4 and 36 weeks. Shown are median values with 95% confidence intervals in the two studies. Values for the baseline measurement were obtained before randomization into a parent study. The dashed lines indicate that patients were receiving either evolocumab or placebo during the period from baseline to enrollment into OSLER. In the chart below the graph, the absolute and percentage reductions in the LDL level in the evolocumab group are compared with those in the standard-therapy group and are presented as means. To convert the values for cholesterol to millimoles per liter, multiply by 0.02586.

In the evolocumab group, as compared with the standard-therapy group, changes in related atherogenic lipid measures were similar to those observed for LDL cholesterol, with reductions of 52.0% in non-HDL cholesterol, 47.3% in apolipoprotein B, 36.1% in total cholesterol, 12.6% in triglycerides, and 25.5% in lipoprotein(a) ( $P < 0.001$  for all comparisons) (Fig. S2 in the Supplementary Appendix). Evolocumab raised levels of HDL cholesterol and apolipoprotein A1 by 7.0% and 4.2%, respectively ( $P < 0.001$  for both comparisons).

**SAFETY AND SIDE-EFFECT PROFILE**

Adverse events occurred in 2060 of 2976 patients (69.2%) in the evolocumab group and in 965 of 1489 patients (64.8%) in the standard-therapy group (Table 3). Serious adverse events occurred in 222 patients (7.5%) in the evolocumab group and in 111 patients (7.5%) in the standard-therapy group. Elevations in aminotransferase or creatine kinase levels occurred at a similar rate in the two groups: 1.0% in the evolocumab group and 1.2% in

the standard-therapy group for elevated amino transferase levels and 0.6% and 1.1%, respectively, for elevated creatine kinase levels. Although the rate of neurocognitive adverse events was low ( $< 1\%$ ), such events were reported more frequently in the evolocumab group. Of note, the incidence of neurocognitive adverse events did not appear to be related to the LDL cholesterol level during treatment (Table S2 in the Supplementary Appendix). Other adverse events are listed in Table S3 in the Supplementary Appendix.

Injection-site reactions were reported in 129 patients (4.3%) in the evolocumab group (the only group in which such events were analyzed) and led to discontinuation of evolocumab in 6 patients (0.2%). New evolocumab-binding antibodies were detected in 9 patients (0.3%) in the evolocumab group and in 4 patients (0.3%) in the standard-therapy group, and binding-antibody titers were transient in patients who had repeat testing. No neutralizing antibodies against evolocumab were detected.

**Table 3. Adverse Events and Laboratory Results.\***

Variable	Evolocumab Group (N=2976)	Standard-Therapy Group (N=1489)
<b>Adverse events</b>		
Any	2060 (69.2)	965 (64.8)
Serious	222 (7.5)	111 (7.5)
Leading to discontinuation of evolocumab	71 (2.4)	NA
Muscle-related	190 (6.4)	90 (6.0)
Injection-site reaction	129 (4.3)	NA
Neurocognitive event†‡	27 (0.9)	4 (0.3)
Other‡		
Arthralgia	137 (4.6)	48 (3.2)
Headache	106 (3.6)	32 (2.1)
Limb pain	99 (3.3)	32 (2.1)
Fatigue	83 (2.8)	15 (1.0)
<b>Laboratory results</b>		
Alanine or aspartate aminotransferase >3×ULN at any visit after baseline	31 (1.0)	18 (1.2)
Creatine kinase >5×ULN at any visit after baseline	17 (0.6)	17 (1.1)

\* NA denotes not applicable, and ULN upper limit of the normal range.

† Neurocognitive events were delirium (including confusion), cognitive and attention disorders and disturbances, dementia and amnesic conditions, disturbances in thinking and perception, and mental impairment disorders.

‡ Included in this category are adverse events that were reported in at least 1% of patients in the evolocumab group and in more patients in the evolocumab group than in the standard-therapy group by at least 1 percentage point.

Rates of overall adverse events, serious adverse events, and elevations in aminotransferase or creatine kinase levels were similar among patients in the evolocumab group who had LDL cholesterol levels of less than 40 mg per deciliter or less than 25 mg per deciliter as in those with higher levels during OSLER (Table S2 in the Supplementary Appendix).

#### CARDIOVASCULAR EVENTS

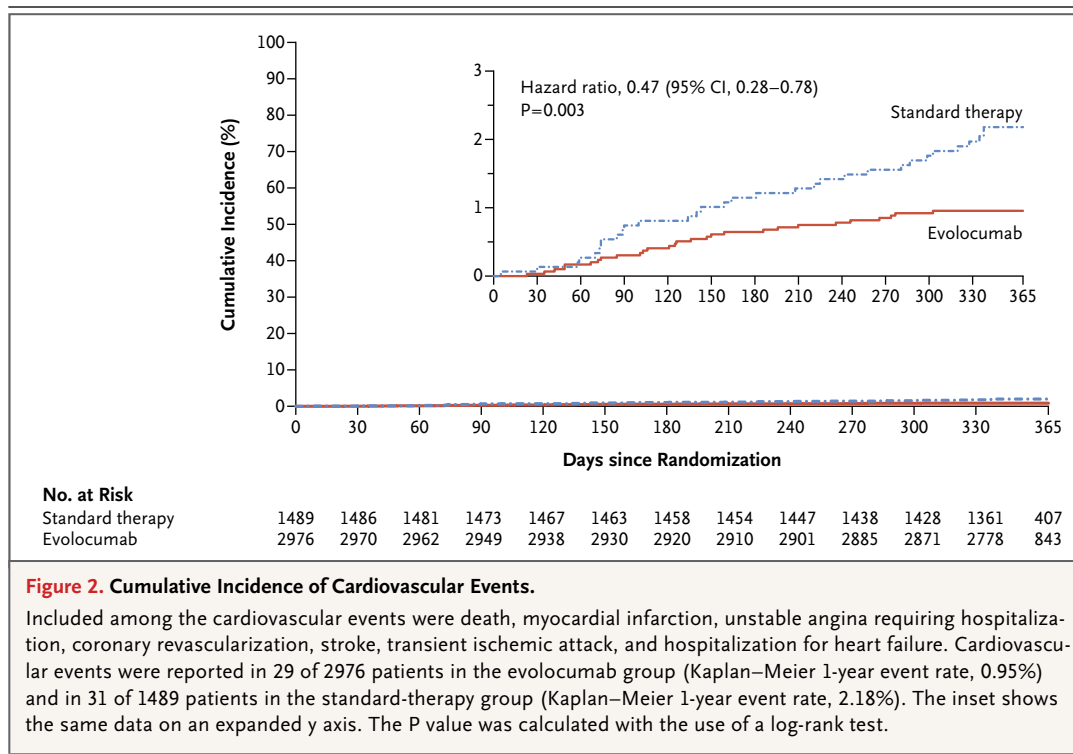
Cardiovascular events were prospectively adjudicated in an exploratory analysis (Table S4 in the Supplementary Appendix). When these events were combined in a composite of all cardiovascular events, patients in the evolocumab group had a significantly lower rate of all cardiovascular events than did patients in the standard-therapy group (Kaplan–Meier estimates at 1 year, 0.95% and 2.18%, respectively; hazard ratio, 0.47; 95% CI, 0.28 to 0.78;  $P=0.003$ ). The cumulative incidence curves diverged progressively over time (Fig. 2). Similar results were obtained for the post hoc composite

of major adverse cardiovascular events (Table S4 in the Supplementary Appendix).

#### DISCUSSION

In the OSLER-1 and OSLER-2 trials, open-label treatment with evolocumab reduced LDL cholesterol levels by 61%, from a pretreatment median level of 120 mg per deciliter to a 12-week on-treatment median level of 48 mg per deciliter. This result was consistent with reports from previous short-term trials of evolocumab.<sup>9-17,19</sup> In the OSLER trials, the reduction in LDL cholesterol levels was sustained through 48 weeks, a finding consistent with the results of a much smaller study of evolocumab.<sup>9</sup> Effects on other lipid fractions were also similar to those seen in previous studies.

Some nonspecific adverse events (arthralgia, headache, limb pain, and fatigue) and neurocognitive adverse events were reported more frequently in the evolocumab group than in the



**Figure 2. Cumulative Incidence of Cardiovascular Events.**

Included among the cardiovascular events were death, myocardial infarction, unstable angina requiring hospitalization, coronary revascularization, stroke, transient ischemic attack, and hospitalization for heart failure. Cardiovascular events were reported in 29 of 2976 patients in the evolocumab group (Kaplan–Meier 1-year event rate, 0.95%) and in 31 of 1489 patients in the standard-therapy group (Kaplan–Meier 1-year event rate, 2.18%). The inset shows the same data on an expanded y axis. The P value was calculated with the use of a log-rank test.

standard-therapy group. These observations should be viewed in the context of the greater number of protocol-stipulated in-person visits for patients in the evolocumab group as well as the open-label nature of the trial, which could predispose patients who are receiving the study intervention to be more likely to note adverse events, particularly those associated with other therapies that reduce LDL cholesterol.<sup>24</sup> Moreover, there did not appear to be any excess of these events in patients who had very low versus higher on-treatment levels of LDL cholesterol. Furthermore, PCSK9 loss-of-function variants have not been associated with impaired cognitive performance.<sup>25</sup> Nonetheless, much larger trials, including a dedicated neurocognitive substudy (ClinicalTrials.gov number, NCT02207634),<sup>26</sup> are ongoing to provide more definitive assessments of safety over longer-term follow-up.

An unanswered question is whether a reduction in the LDL cholesterol level with a PCSK9 inhibitor will lead to a reduction in cardiovascular events. Reduction in such events with statins has been well established during the past two decades in numerous large, randomized, controlled trials.<sup>1,2</sup> In contrast, it has been difficult

to show that adding other lipid-modifying drugs to statins results in a further decrease in cardiovascular events, which is probably due to the modest effects on LDL cholesterol or off-target adverse effects.<sup>27–30</sup> This issue was a factor contributing to the most recent set of practice guidelines from the American College of Cardiology–American Heart Association, in which the role of nonstatin lipid-modifying drugs was diminished, as compared with previous guidelines.<sup>4</sup> Recently, however, in the Improved Reduction of Outcomes: Vytorin Efficacy International Trial (IMPROVE-IT), an additional reduction in LDL cholesterol levels with the addition of ezetimibe, a cholesterol-absorption inhibitor, to a statin significantly reduced cardiovascular events, as compared with statin monotherapy.<sup>3</sup> These data have refocused attention on the potential cardiovascular benefit of greater LDL cholesterol reduction through nonstatin mechanisms.

Evolocumab, unlike other nonstatin lipid-modifying drugs, reduces LDL cholesterol levels as much as, if not more than, high doses of statins. Also, PCSK9 inhibitors have the same ultimate mechanism for LDL reduction as statins — namely, by increasing LDL receptor activity on



the hepatocyte surface,<sup>8</sup> suggesting that PCSK9 inhibitors should similarly have a beneficial effect on cardiovascular outcomes. Additional support for the potential of PCSK9 inhibition in reducing cardiovascular events comes from the observation that loss-of-function genetic variants leading to reductions in PCSK9 activity have been associated with significantly lower lifetime rates of cardiovascular events.<sup>31</sup> Thus, the reduction in cardiovascular events seen in the OSLER trials within the first year of evolocumab therapy, even though the analysis was both exploratory and based on a relatively small number of events, is consistent with the large reduction in LDL cholesterol levels, the mechanism of action, and the PCSK9 genetic data.

The Further Cardiovascular Outcomes Research with PCSK9 Inhibition in Subjects with Elevated Risk (FOURIER) study (NCT01764633) is an ongoing trial that is intended to provide a definitive assessment of the cardiovascular benefit of evolocumab. The FOURIER study is a randomized, placebo-controlled trial involving 27,500 high-risk patients with cardiovascular disease who are receiving background statin therapy; the primary end point is a composite of cardiovascular death, myocardial infarction, hospitalization for unstable angina, stroke, or coronary revascularization.<sup>32</sup> Similar trials of alirocumab and bococizumab to evaluate cardiovascular outcomes are in progress (NCT01663402, NCT01975376, and NCT01975389).<sup>33-35</sup>

Several study limitations are noteworthy. First, the open-label design of the trials could have had an influence on the reporting of events, both cardiovascular and safety. This issue would es-

pecially be a concern for coronary revascularization, the single most frequently reported cardiovascular event, since the decision to perform this procedure could have been influenced by knowledge of treatment assignment. Second, the numbers of cardiovascular and select adverse events were relatively small. Third, although rates of adverse events and study-drug discontinuation were low in the parent trials,<sup>9-17,19</sup> patients were eligible to transition to the OSLER trials if they had not had an adverse event that led to the discontinuation of a study drug. Thus, data on safety and side-effect profiles in our study come from a cohort of patients who had all successfully received injections and many of whom had received evolocumab for at least 12 weeks. Fourth, the OSLER program included a mix of patients with varying degrees of cardiovascular risk and use and intensity of statin therapy. Thus, not all the study patients would necessarily have been the optimal target population for this novel treatment.

In conclusion, patients who had previously participated in 12 shorter-term parent trials of the PCSK9 inhibitor evolocumab underwent repeat randomization to receive either evolocumab or standard therapy in the OSLER program. Evolocumab reduced levels of LDL cholesterol by 61% by 12 weeks, with sustained reduction through the median 11-month follow-up. In a prespecified exploratory analysis, there was evidence of a reduction in the rate of cardiovascular events among patients receiving evolocumab.

Supported by Amgen.

Disclosure forms provided by the authors are available with the full text of this article at NEJM.org.

## REFERENCES

1. Baigent C, Keech A, Kearney PM, et al. Efficacy and safety of cholesterol-lowering treatment: prospective meta-analysis of data from 90,056 participants in 14 randomised trials of statins. *Lancet* 2005; 366:1267-78. [Errata, *Lancet* 2005;366:1358, 2008;371:2084.]
2. Cholesterol Treatment Trialists' (CTT) Collaboration. Efficacy and safety of more intensive lowering of LDL cholesterol: a meta-analysis of data from 170,000 participants in 26 randomised trials. *Lancet* 2010;376:1670-81.
3. Cannon CP. IMPROVED Reduction of Outcomes: Vytorin Efficacy International Trial (IMPROVE-IT). Presented at the American Heart Association Scientific Sessions, Chicago, November 15-18, 2014. abstract.
4. Stone NJ, Robinson JG, Lichtenstein AH, et al. 2013 ACC/AHA guideline on the treatment of blood cholesterol to reduce atherosclerotic cardiovascular risk in adults: a report of the American College of Cardiology/American Heart Association Task Force on Practice Guidelines. *Circulation* 2014;129:Suppl 2:S1-S45. [Erratum, *Circulation* 2014;129:Suppl2:S46-S48.]
5. Reiner Z, Catapano AL, De Backer G, et al. ESC/EAS guidelines for the management of dyslipidaemias: the Task Force for the management of dyslipidaemias of the European Society of Cardiology (ESC) and the European Atherosclerosis Society (EAS). *Eur Heart J* 2011;32:1769-818.
6. Anderson TJ, Grégoire J, Hegele RA, et al. 2012 Update of the Canadian Cardiovascular Society guidelines for the diagnosis and treatment of dyslipidemia for the prevention of cardiovascular disease in the adult. *Can J Cardiol* 2013;29:151-67.
7. Jacobson TA, Ito MK, Maki KC, et al. National Lipid Association recommendations for patient-centered management of dyslipidemia: part 1 — executive summary. *J Clin Lipidol* 2014;8:473-88.
8. Stein EA, Raal FJ. New therapies for reducing low-density lipoprotein cholesterol. *Endocrinol Metab Clin North Am* 2014;43:1007-33.
9. Blom DJ, Hala T, Bolognese M, et al. A 52-week placebo-controlled trial of evolocumab in hyperlipidemia. *N Engl J Med* 2014;370:1809-19.
10. Robinson JG, Nedergaard BS, Rogers WJ, et al. Effect of evolocumab or ezetimibe added to moderate- or high-intensity statin therapy on LDL-C lowering in

- patients with hypercholesterolemia: the LAPLACE-2 randomized clinical trial. *JAMA* 2014;311:1870-82.
11. Koren MJ, Lundqvist P, Bolognese M, et al. Anti-PCSK9 monotherapy for hypercholesterolemia: the MENDEL-2 randomized, controlled phase III clinical trial of evolocumab. *J Am Coll Cardiol* 2014;63:2531-40.
  12. Stroes E, Colquhoun D, Sullivan D, et al. Anti-PCSK9 antibody effectively lowers cholesterol in patients with statin intolerance: the GAUSS-2 randomized, placebo-controlled phase 3 clinical trial of evolocumab. *J Am Coll Cardiol* 2014;63:2541-8.
  13. Raal FJ, Stein EA, Dufour R, et al. PCSK9 inhibition with evolocumab (AMG 145) in heterozygous familial hypercholesterolemia (RUTHERFORD-2): a randomised, double-blind, placebo-controlled trial. *Lancet* 2015;385:331-40.
  14. Giugliano RP, Desai NR, Kohli P, et al. Efficacy, safety, and tolerability of a monoclonal antibody to proprotein convertase subtilisin/kexin type 9 in combination with a statin in patients with hypercholesterolemia (LAPLACE-TIMI 57): a randomised, placebo-controlled, dose-ranging, phase 2 study. *Lancet* 2012;380:2007-17.
  15. Koren MJ, Scott R, Kim JB, et al. Efficacy, safety, and tolerability of a monoclonal antibody to proprotein convertase subtilisin/kexin type 9 as monotherapy in patients with hypercholesterolemia (MENDEL): a randomised, double-blind, placebo-controlled, phase 2 study. *Lancet* 2012;380:1995-2006.
  16. Raal F, Scott R, Somaratne R, et al. Low-density lipoprotein cholesterol-lowering effects of AMG 145, a monoclonal antibody to proprotein convertase subtilisin/kexin type 9 serine protease in patients with heterozygous familial hypercholesterolemia: the Reduction of LDL-C with PCSK9 Inhibition in Heterozygous Familial Hypercholesterolemia Disorder (RUTHERFORD) randomized trial. *Circulation* 2012;126:2408-17.
  17. Sullivan D, Olsson AG, Scott R, et al. Effect of a monoclonal antibody to PCSK9 on low-density lipoprotein cholesterol levels in statin-intolerant patients: the GAUSS randomized trial. *JAMA* 2012;308:2497-506.
  18. Koren MJ, Giugliano RP, Raal FJ, et al. Efficacy and safety of longer-term administration of evolocumab (AMG 145) in patients with hypercholesterolemia: 52-week results from the Open-Label Study of Long-Term Evaluation Against LDL-C (OSLER) randomized trial. *Circulation* 2014;129:234-43.
  19. Hirayama A, Honarpour N, Yoshida M, et al. Effects of evolocumab (AMG 145), a monoclonal antibody to PCSK9, in hypercholesterolemic, statin-treated Japanese patients at high cardiovascular risk—primary results from the phase 2 YUKAWA study. *Circ J* 2014;78:1073-82.
  20. ClinicalTrials.gov. NCT01849497: a multi-center, randomized study in subjects with primary hypercholesterolemia or mixed dyslipidemia (<http://ClinicalTrials.gov/show/NCT01849497>).
  21. ClinicalTrials.gov. NCT01879319: a randomized, multi-center clinical study in subjects with hypercholesterolemia or mixed dyslipidemia (<http://ClinicalTrials.gov/show/NCT01879319>).
  22. Dias CS, Shaywitz AJ, Wasserman SM, et al. Effects of AMG 145 on low-density lipoprotein cholesterol levels: results from 2 randomized, double-blind, placebo-controlled, ascending-dose phase 1 studies in healthy volunteers and hypercholesterolemic subjects on statins. *J Am Coll Cardiol* 2012;60:1888-98.
  23. Friedewald WT, Levy RI, Fredrickson DS. Estimation of the concentration of low-density lipoprotein cholesterol in plasma, without use of the preparative ultracentrifuge. *Clin Chem* 1972;18:499-502.
  24. FDA expands advice on statin risks. Silver Spring, MD: Food and Drug Administration (<http://www.fda.gov/ForConsumers/ConsumerUpdates/ucm293330.htm#2>).
  25. Postmus I, Trompet S, de Craen AJ, et al. PCSK9 SNP rs11591147 is associated with low cholesterol levels but not with cognitive performance or noncardiovascular clinical events in an elderly population. *J Lipid Res* 2013;54:561-6.
  26. ClinicalTrials.gov. NCT02207634: Evaluating PCSK9 Binding antiBody Influence on Cognitive Health in High cardiovascular Risk Subjects (EBBINGHAUS) (<https://clinicaltrials.gov/ct2/show/NCT02207634>).
  27. Barter PJ, Caulfield M, Eriksson M, et al. Effects of torcetrapib in patients at high risk for coronary events. *N Engl J Med* 2007;357:2109-22.
  28. Schwartz GG, Olsson AG, Abt M, et al. Effects of dalcetrapib in patients with a recent acute coronary syndrome. *N Engl J Med* 2012;367:2089-99.
  29. The AIM-HIGH Investigators. Niacin in patients with low HDL cholesterol levels receiving intensive statin therapy. *N Engl J Med* 2011;365:2255-67. [Erratum, *N Engl J Med* 2012;367:189.]
  30. The HPS2-THRIVE Collaborative Group. Effects of extended-release niacin with laropiprant in high-risk patients. *N Engl J Med* 2014;371:203-12.
  31. Cohen JC, Boerwinkle E, Mosley TH Jr, Hobbs HH. Sequence variations in PCSK9, low LDL, and protection against coronary heart disease. *N Engl J Med* 2006;354:1264-72.
  32. ClinicalTrials.gov. NCT01764633: Further Cardiovascular Outcomes Research with PCSK9 Inhibition in Subjects with Elevated Risk (FOURIER) (<http://ClinicalTrials.gov/show/NCT01764633>).
  33. ClinicalTrials.gov. NCT01663402: ODYSSEY outcomes: evaluation of cardiovascular outcomes after an acute coronary syndrome during treatment with alirocumab SAR236553 (REGN727) (<http://ClinicalTrials.gov/show/NCT01663402>).
  34. ClinicalTrials.gov. NCT01975376: the evaluation of bococizumab (PF-04950615; RN316) in reducing the occurrence of major cardiovascular events in high risk subjects (SPIRE-1) (<http://ClinicalTrials.gov/show/NCT01975376>).
  35. ClinicalTrials.gov. NCT01975389: the evaluation of bococizumab (PF-04950615; RN316) in reducing the occurrence of major cardiovascular events in high risk subjects (SPIRE-2) (<http://ClinicalTrials.gov/show/NCT01975389>).

Copyright © 2015 Massachusetts Medical Society.

**AN NEJM APP FOR iPhone**

The NEJM Image Challenge app brings a popular online feature to the smartphone. Optimized for viewing on the iPhone and iPod Touch, the Image Challenge app lets you test your diagnostic skills anytime, anywhere. The Image Challenge app randomly selects from 300 challenging clinical photos published in NEJM, with a new image added each week. View an image, choose your answer, get immediate feedback, and see how others answered. The Image Challenge app is available at the iTunes App Store.