

Gilead Sciences' Commitment to Global Elimination of Hepatitis C Virus

Son A¹, Khoshabafard D¹, Cheinquer N¹, Sajed N¹, Haubrich R¹, Platis S¹, Mignano J¹, Skaria A¹, Becker M¹, Zuka K¹, Attridge A¹, Chiang B¹, Israelski D¹, Mir H¹, Ryu J¹, Vanstraelen K¹, Soyemi T¹, Mertens M¹, Kreter B¹
¹Gilead Sciences, Inc.

WHO Global Hepatitis Report



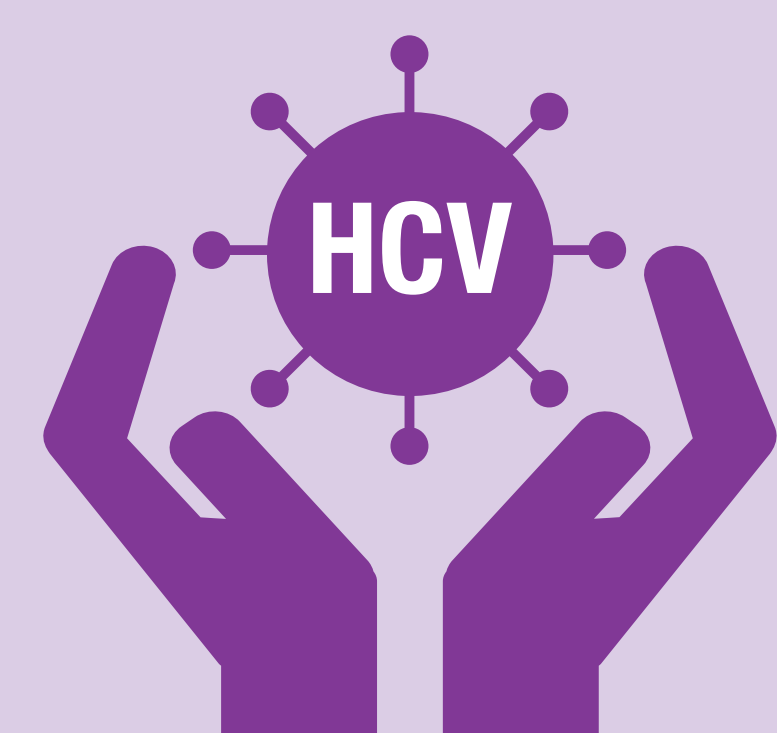
71M

People living with HCV infection globally¹



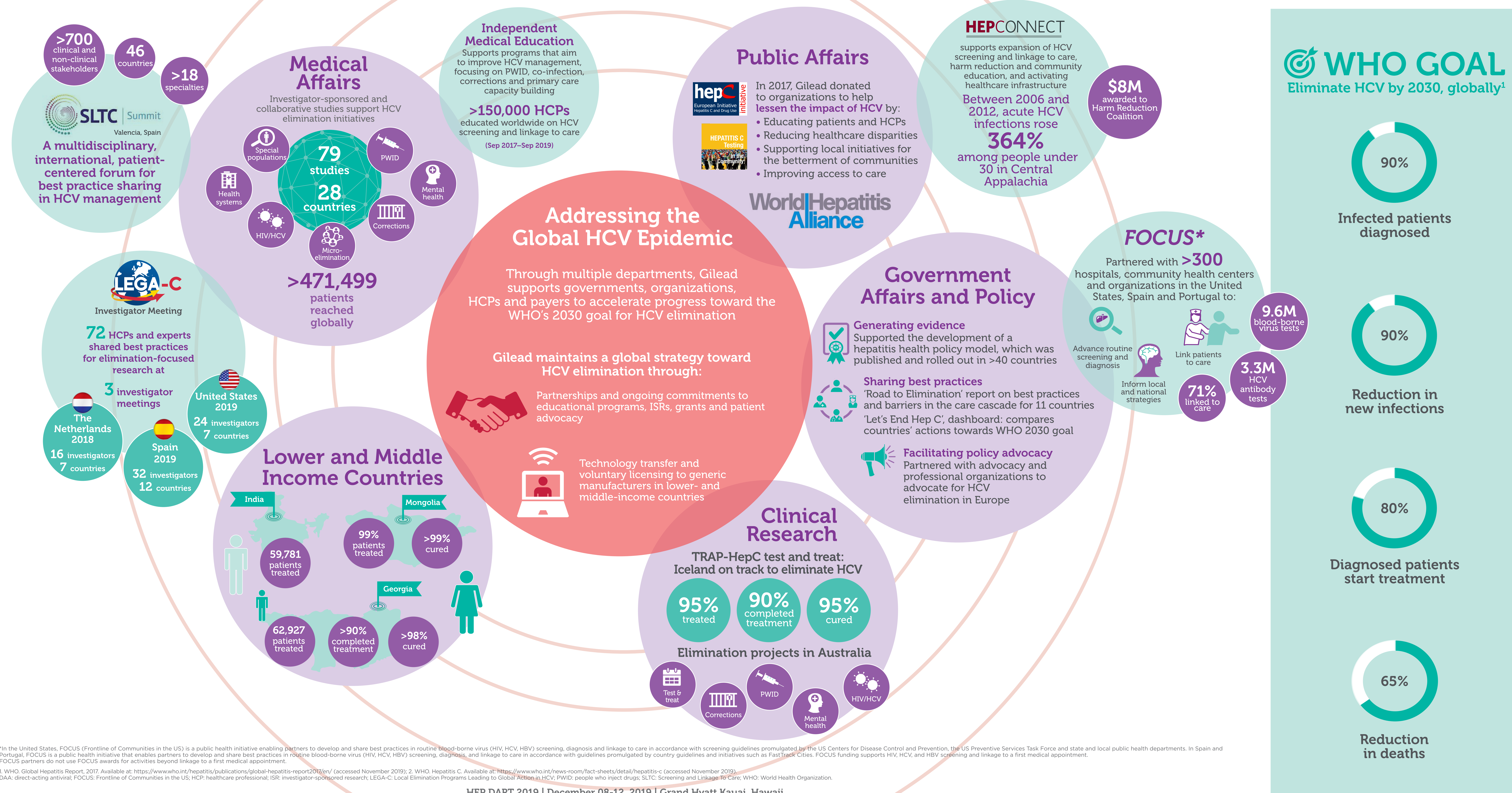
14M

Infected people diagnosed (20%)¹



~5M

Diagnosed patients initiated treatment (36%)²



¹In the United States, FOCUS (Frontline of Communities in the US) is a public health initiative enabling partners to develop and share best practices in routine blood-borne virus (HIV, HCV, HBV) screening, diagnosis, and linkage to care in accordance with screening guidelines promulgated by the US Centers for Disease Control and Prevention, the US Preventive Services Task Force and state and local public health departments. In Spain and Portugal, FOCUS is a public health initiative that enables partners to develop and share best practices in routine blood-borne virus (HIV, HCV, HBV) screening, diagnosis, and linkage to care in accordance with guidelines promulgated by country guidelines and initiatives such as FastTrack Cities. FOCUS funding supports HIV, HCV, and HBV screening and linkage to a first medical appointment. FOCUS partners do not use FOCUS awards for activities beyond linkage to a first medical appointment.

²WHO. Global Hepatitis Report, 2017. Available at: <https://www.who.int/hepatitis/publications/global-hepatitis-report2017/en/> (accessed November 2019); WHO. Hepatitis C. Available at: <https://www.who.int/news-room/fact-sheets/detail/hepatitis-c> (accessed November 2019). DAA: direct-acting antiviral; FOCUS: Frontline of Communities in the US; HCP: healthcare professional; ISR: investigator-sponsored research; LEGA-C: Local Elimination Programs Leading to Global Action in HCV; PWID: people who inject drugs; SLTC: Screening and Linkage To Care; WHO: World Health Organization.